

CATALOGUE NO. 8635.6  
EMBARGOED UNTIL 11.30 A.M. 20 MARCH 1995

**TOURIST ACCOMMODATION, TASMANIA, DECEMBER QUARTER 1994**

**MAIN FEATURES**

DECEMBER QUARTER 1994  
COMPARED WITH  
DECEMBER QUARTER 1993

**HOTELS, MOTELS AND GUEST HOUSES**

- Rooms available increased by 0.2 per cent to 5,354 while room nights occupied increased by 2.6 per cent from 265,421 to 272,366.
- The room occupancy rate rose from 54.0 per cent to 55.4 per cent.
- Guest nights increased by 6.1 per cent to 477,933 and the bed occupancy rate increased from 31.2 per cent to 33.3 per cent.
- Guest arrivals at hotels, motels and guest houses increased by 10.3 per cent to 275,413 while average length of stay decreased from 1.8 days to 1.7 days.
- Takings from accommodation increased by 8.0 per cent to \$20.2m. Average takings per room night occupied increased from \$70 to \$74.

**HOLIDAY FLATS, UNITS AND HOUSES**

- The number of units, etc. available for short-term letting increased by 5.8 per cent to 816 while unit nights occupied increased by 12.7 per cent to 42,775.
- The unit occupancy rate increased from 53.5 per cent to 57.0 per cent.
- Unit lettings increased by 16.8 per cent but average length of stay decreased from 2.1 days to 2.0 days.
- Accommodation takings increased by 23.9 per cent to \$3.0m. Average takings per unit night occupied increased from \$65 to \$71.

**CARAVAN PARKS**

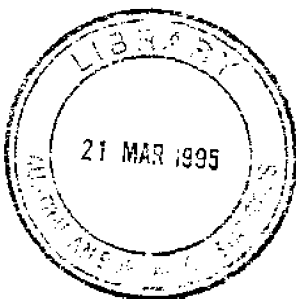
- Capacity available increased by 8.2 per cent to 6,953 sites and cabins, etc. while site nights occupied increased by 9.6 per cent from 177,689 to 194,740.
- The site occupancy rate increased by 0.3 percentage points to 30.4 per cent.
- Long-term residents occupied 461 sites, etc. (6.6 per cent) while 1,006 sites (14.5 per cent) were permanently reserved but only casually occupied by their tenants and an average of 650 sites (9.3 per cent) were occupied by other short-term guests.
- Accommodation takings increased by 14.4 per cent to \$1.82m.

**VISITOR HOSTELS**

- Bed spaces available increased by 23.2 per cent from 1,471 to 1,813.
- Guest nights sold increased from 18,937 to 28,376 and the bed occupancy rate increased from 14.0 per cent to 17.1 per cent.
- Guest arrivals increased from 13,418 to 17,106 while average length of stay increased from 1.4 days to 1.7 days.
- Accommodation takings increased from \$0.22m to \$0.38m while average takings per guest night increased from \$11 to \$13.

**PASSENGER ARRIVALS**

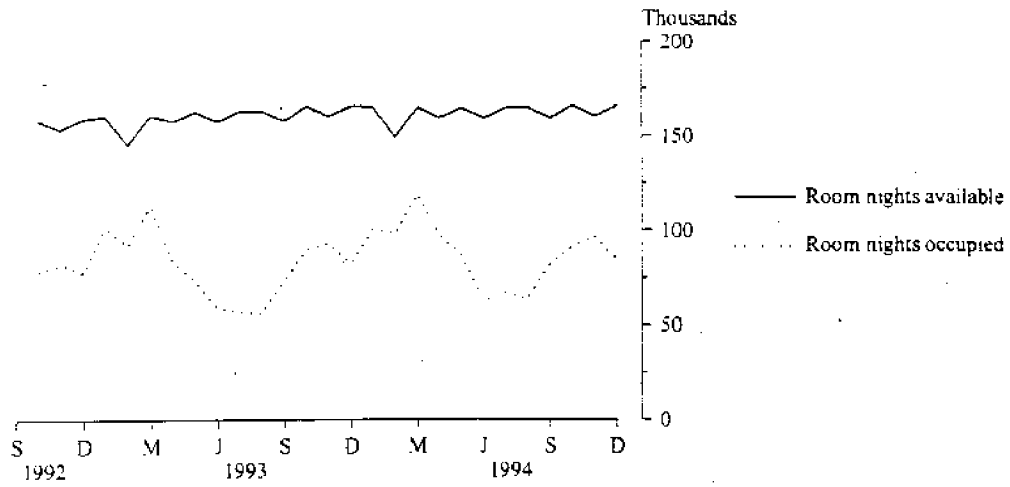
- Total arrivals into Tasmania by air and sea for the December quarter 1994 totalled 240,596 which was a 7.4 per cent increase on the December quarter 1993 figure of 224,102.



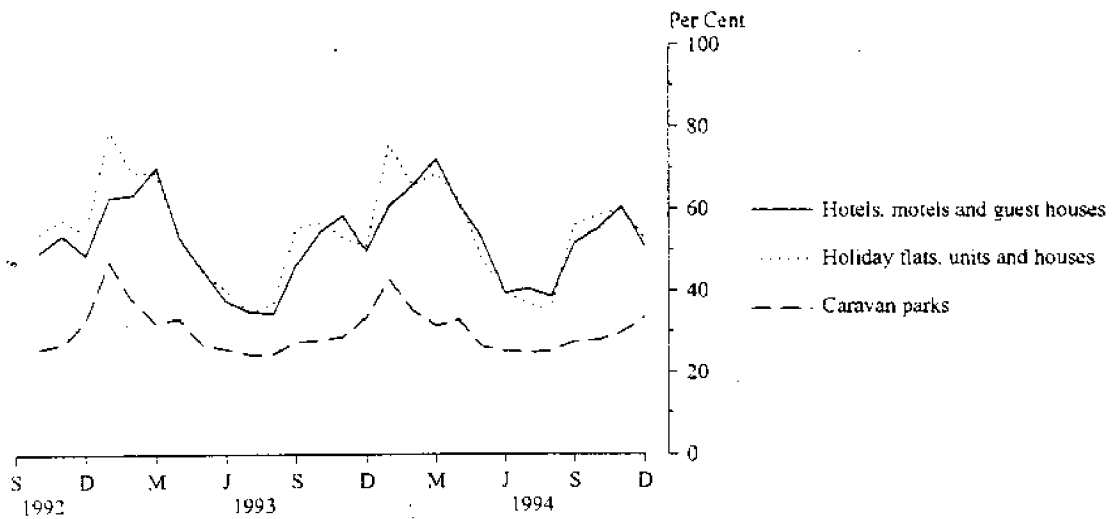
**INQUIRIES**

- For inquiries concerning these statistics and the availability of related unpublished statistics, contact Greg McNamara on Brisbane 008 077285 or any ABS office.
- For other inquiries including copies of publications, telephone the Information Officer on Hobart (002) 20 5800.
- The Tasmanian Office of the Bureau is located on the first floor, 175 Collins Street, Hobart (GPO Box 66A, Hobart 7001).

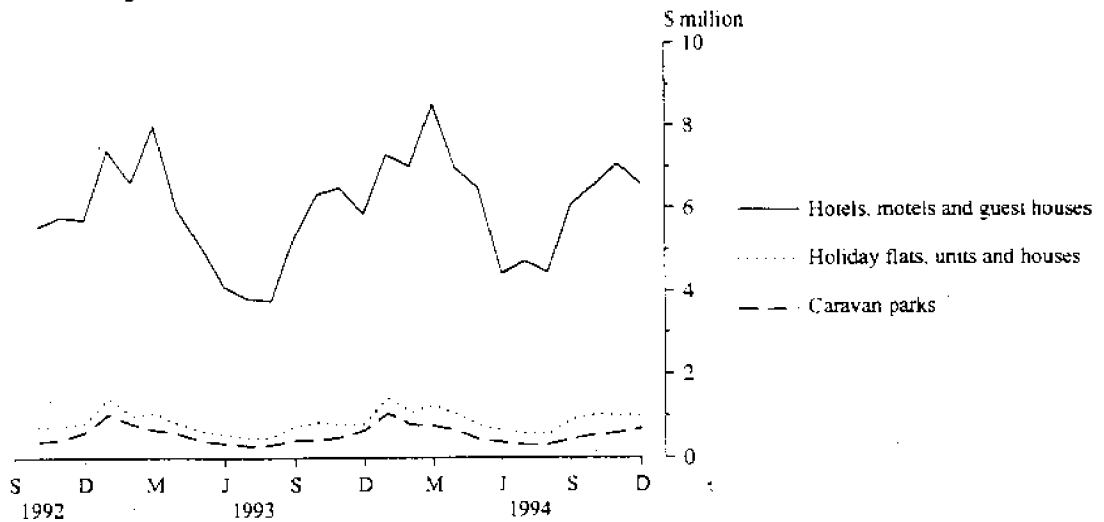
**MONTHLY ROOM NIGHTS AVAILABLE AND OCCUPIED:  
HOTELS, MOTELS AND GUEST HOUSES,  
TASMANIA**



**MONTHLY OCCUPANCY RATES,  
TASMANIA**



**MONTHLY TAKINGS FROM ACCOMMODATION,  
TASMANIA**



## CONTENTS

| <i>Table</i>  | <i>Page</i> |
|---|-------------|
| " Main features   | 1           |
| " Diagrams  | 2           |
| 1 Summary of hotels, motels and guest houses with facilities, Tasmania  | 4           |
| 2 Summary of caravan parks, Tasmania  | 5           |
| 3 Summary of holiday flats, units and houses, Tasmania  | 6           |
| 4 Summary of visitor hostels, Tasmania  | 6           |
| 5 Room nights, unit nights and site nights occupied: Seasonally adjusted and trend estimates, Tasmania                  | 7           |
| 6 Hotels, motels and guest houses with facilities by star grading, Tasmania   | 8           |
| 7 Hotels, motels and guest houses with facilities by establishment size, Tasmania                                       | 9           |
| 8 Hotels, motels and guest houses with facilities by statistical division, Tasmania                                     | 10          |
| 9 Hotels, motels and guest houses with facilities: Statistical divisions and selected statistical local areas, Tasmania | 12          |
| " Diagrams: Monthly room/unit occupancy rates   | 14          |
| 10 Holiday flats, units and houses by statistical division and selected statistical areas, Tasmania                     | 16          |
| 11 Caravan parks by statistical division and selected statistical areas, Tasmania                                       | 17          |
| 12 Visitor hostels by statistical division, Tasmania  | 18          |
| 13 Passenger arrivals and departures, Tasmania; interstate and international  | 19          |
| 14 Total passenger arrivals by air and sea into Tasmania: Seasonally adjusted and trend estimates                       | 20          |
| " Explanatory Notes   | 21          |

TABLE 1 — SUMMARY OF HOTELS, MOTELS AND GUEST HOUSES WITH FACILITIES, TASMANIA (a)

| Particulars  | Unit     | Quarter ended     |                  |               |              | Year ended        |                  |                  |                  |
|--|----------|-------------------|------------------|---------------|--------------|-------------------|------------------|------------------|------------------|
|  |          | September<br>1993 | December<br>1993 | March<br>1994 | June<br>1994 | September<br>1994 | December<br>1994 | December<br>1993 | December<br>1994 |
| <b>LICENSED HOTELS WITH FACILITIES</b>                       |          |                   |                  |               |              |                   |                  |                  |                  |
| Establishments   | No.      | 92                | 93               | 92            | 91           | 91                | 92               | ..               | ..               |
| Guest rooms  | No.      | 3,410             | 3,510            | 3,489         | 3,488        | 3,513             | 3,526            | ..               | ..               |
| Bed spaces   | No.      | 9,831             | 10,044           | 9,993         | 9,961        | 9,856             | 9,921            | ..               | ..               |
| Employment (persons)   | No.      | 3,370             | 3,410            | 3,587         | 3,468        | 3,474             | 3,576            | ..               | ..               |
| Room nights occupied   | No.      | 127,968           | 175,628          | 205,931       | 163,803      | 145,246           | 177,580          | 647,777          | 692,560          |
| Room occupancy rate  | per cent | 40.8              | 54.4             | 65.6          | 51.6         | 45.0              | 54.9             | 51.6             | 54.2             |
| Guest nights   | No.      | 209,261           | 290,835          | 370,707       | 263,797      | 239,577           | 302,266          | 1,105,025        | 1,176,347        |
| Bed occupancy rate   | per cent | 23.1              | 31.5             | 41.2          | 29.1         | 26.4              | 33.2             | 30.7             | 32.5             |
| Guest arrivals   | No.      | 106,744           | 158,903          | 201,600       | 143,788      | 125,155           | 170,077          | 574,300          | 640,620          |
| Average length of stay                                       | days     | 2.0               | 1.8              | 1.8           | 1.8          | 1.9               | 1.8              | 1.9              | 1.8              |
| Takings from accommodation                                   | \$'000   | 9,500             | 13,366           | 15,769        | 12,660       | 11,109            | 14,188           | 49,213           | 53,726           |
| <b>MOTELS AND GUEST HOUSES WITH FACILITIES</b>               |          |                   |                  |               |              |                   |                  |                  |                  |
| Establishments   | No.      | 98                | 86               | 86            | 86           | 83                | 85               | ..               | ..               |
| Guest rooms  | No.      | 1,856             | 1,832            | 1,845         | 1,834        | 1,803             | 1,828            | ..               | ..               |
| Bed spaces   | No.      | 5,721             | 5,625            | 5,665         | 5,617        | 5,550             | 5,674            | ..               | ..               |
| Employment (persons)   | No.      | 712               | 774              | 754           | 751          | 747               | 815              | ..               | ..               |
| Room nights occupied   | No.      | 58,271            | 89,793           | 112,094       | 83,937       | 67,209            | 94,786           | 325,884          | 358,026          |
| Room occupancy rate  | per cent | 34.3              | 53.3             | 67.5          | 50.4         | 40.6              | 56.4             | 49.1             | 53.7             |
| Guest nights   | No.      | 102,277           | 159,561          | 219,215       | 152,442      | 122,573           | 175,667          | 599,712          | 669,897          |
| Bed occupancy rate   | per cent | 19.5              | 30.8             | 43.0          | 29.9         | 24.0              | 33.7             | 29.2             | 32.6             |
| Guest arrivals   | No.      | 58,770            | 90,835           | 121,933       | 86,979       | 69,307            | 105,336          | 337,315          | 383,555          |
| Average length of stay                                       | days     | 1.7               | 1.8              | 1.8           | 1.8          | 1.8               | 1.7              | 1.8              | 1.7              |
| Takings from accommodation                                   | \$'000   | 3,377             | 5,294            | 7,044         | 5,139        | 4,120             | 5,971            | 19,565           | 22,273           |
| <b>TOTAL HOTELS, MOTELS AND GUEST HOUSES WITH FACILITIES</b> |          |                   |                  |               |              |                   |                  |                  |                  |
| Establishments   | No.      | 190               | 179              | 178           | 177          | 174               | 177              | ..               | ..               |
| Guest rooms  | No.      | 5,266             | 5,342            | 5,334         | 5,322        | 5,316             | 5,354            | ..               | ..               |
| Bed spaces   | No.      | 15,552            | 15,669           | 15,658        | 15,578       | 15,406            | 15,595           | ..               | ..               |
| Employment (persons)   | No.      | 4,082             | 4,184            | 4,341         | 4,219        | 4,221             | 4,391            | ..               | ..               |
| Room nights occupied   | No.      | 186,239           | 265,421          | 318,025       | 247,740      | 212,455           | 272,366          | 973,661          | 1,050,586        |
| Room occupancy rate  | per cent | 38.5              | 54.0             | 66.2          | 51.2         | 43.5              | 55.4             | 50.7             | 54.0             |
| Guest nights   | No.      | 311,538           | 450,396          | 589,922       | 416,239      | 362,150           | 477,933          | 1,704,737        | 1,846,244        |
| Bed occupancy rate   | per cent | 21.8              | 31.2             | 41.9          | 29.4         | 25.6              | 33.3             | 30.1             | 32.5             |
| Guest arrivals   | No.      | 165,514           | 249,738          | 323,533       | 230,767      | 194,462           | 275,413          | 911,615          | 1,024,175        |
| Average length of stay                                       | days     | 1.9               | 1.8              | 1.8           | 1.8          | 1.9               | 1.7              | 1.9              | 1.8              |
| Takings from accommodation                                   | \$'000   | 12,878            | 18,661           | 22,812        | 17,799       | 15,229            | 20,159           | 68,778           | 75,999           |

(a) From December quarter 1993, establishments with fewer than 5 rooms have been formally excluded from the scope of this collection. See Explanatory Note 2 (page 21).

TABLE 2 — SUMMARY OF CARAVAN PARKS, TASMANIA

| Particulars                        | Quarter ended |              |              |              |              |              | Year ended   |          |         |
|------------------------------------|---------------|--------------|--------------|--------------|--------------|--------------|--------------|----------|---------|
|                                    | September     | December     | March        | June         | September    | December     | December     | December |         |
|                                    | Unit          | 1993         | 1993         | 1994         | 1994         | 1994         | 1994         | 1994     |         |
| <b>SHORT-TERM CARAVAN PARKS</b>    |               |              |              |              |              |              |              |          |         |
| Establishments                     | No.           | 54           | 56           | 58           | 58           | 63           | 63           | ..       | ..      |
| Capacity                           |               |              |              |              |              |              |              |          |         |
| On-site vans                       | No.           | 255          | 274          | 284          | 284          | 269          | 276          | ..       | ..      |
| Other powered sites                | No.           | 2,678        | 2,782        | 2,943        | 2,977        | 3,085        | 3,095        | ..       | ..      |
| Unpowered sites                    | No.           | 2,021        | 2,083        | 2,197        | 2,201        | 2,276        | 2,266        | ..       | ..      |
| Cabins, etc.                       | No.           | 257          | 306          | 315          | 319          | 347          | 362          | ..       | ..      |
| <i>Total capacity</i>              | No.           | <i>5,211</i> | <i>5,445</i> | <i>5,739</i> | <i>5,781</i> | <i>5,977</i> | <i>5,999</i> | ..       | ..      |
| Sites occupied by long-term guests | No.           | 168          | 210          | 212          | 229          | 260          | 273          | ..       | ..      |
| Other sites permanently reserved   | No.           | 881          | 875          | 858          | 944          | 979          | 986          | ..       | ..      |
| Employment (persons)               | No.           | 155          | 183          | 184          | 175          | 195          | 219          | ..       | ..      |
| Site nights occupied               | No.           | 120,509      | 148,173      | 186,782      | 147,146      | 140,206      | 169,002      | 604,161  | 643,136 |
| Site occupancy rate                | per cent      | 25.1         | 29.6         | 36.2         | 28.0         | 25.5         | 30.6         | 30.3     | 30.0    |
| Takings from accommodation         | \$'000        | 646          | 1,174        | 2,120        | 1,091        | 819          | 1,505        | 4,998    | 5,534   |
| <b>LONG-TERM CARAVAN PARKS</b>     |               |              |              |              |              |              |              |          |         |
| Establishments                     | No.           | 13           | 12           | 12           | 12           | 12           | 12           | ..       | ..      |
| Capacity                           |               |              |              |              |              |              |              |          |         |
| On-site vans                       | No.           | 136          | 120          | 120          | 117          | 116          | 112          | ..       | ..      |
| Other powered sites                | No.           | 607          | 524          | 519          | 489          | 500          | 508          | ..       | ..      |
| Unpowered sites                    | No.           | 286          | 240          | 240          | 225          | 236          | 238          | ..       | ..      |
| Cabins, etc.                       | No.           | 126          | 96           | 97           | 96           | 95           | 96           | ..       | ..      |
| <i>Total capacity</i>              | No.           | <i>1,155</i> | <i>980</i>   | <i>976</i>   | <i>927</i>   | <i>947</i>   | <i>954</i>   | ..       | ..      |
| Sites occupied by long-term guests | No.           | 217          | 195          | 190          | 178          | 184          | 188          | ..       | ..      |
| Other sites permanently reserved   | No.           | 17           | 17           | 16           | 12           | 21           | 20           | ..       | ..      |
| Employment (persons)               | No.           | 43           | 41           | 43           | 44           | 37           | 47           | ..       | ..      |
| Site nights occupied               | No.           | 28,434       | 29,516       | 33,447       | 24,612       | 23,989       | 25,738       | 110,718  | 107,786 |
| Site occupancy rate                | per cent      | 26.8         | 32.7         | 38.1         | 29.2         | 27.5         | 29.3         | 33.0     | 31.1    |
| Takings from accommodation         | \$'000        | 350          | 415          | 475          | 344          | 217          | 313          | 1,397    | 1,350   |
| <b>TOTAL CARAVAN PARKS</b>         |               |              |              |              |              |              |              |          |         |
| Establishments                     | No.           | 67           | 68           | 70           | 70           | 75           | 75           | ..       | ..      |
| Capacity                           |               |              |              |              |              |              |              |          |         |
| On-site vans                       | No.           | 391          | 394          | 404          | 401          | 385          | 388          | ..       | ..      |
| Other powered sites                | No.           | 3,285        | 3,306        | 3,462        | 3,466        | 3,585        | 3,603        | ..       | ..      |
| Unpowered sites                    | No.           | 2,307        | 2,323        | 2,437        | 2,426        | 2,512        | 2,504        | ..       | ..      |
| Cabins, etc.                       | No.           | 383          | 402          | 412          | 415          | 442          | 458          | ..       | ..      |
| <i>Total capacity</i>              | No.           | <i>6,366</i> | <i>6,425</i> | <i>6,715</i> | <i>6,708</i> | <i>6,924</i> | <i>6,953</i> | ..       | ..      |
| Sites occupied by long-term guests | No.           | 385          | 405          | 402          | 407          | 444          | 461          | ..       | ..      |
| Other sites permanently reserved   | No.           | 898          | 892          | 874          | 956          | 1,000        | 1,006        | ..       | ..      |
| Employment (persons)               | No.           | 198          | 224          | 227          | 219          | 232          | 266          | ..       | ..      |
| Site nights occupied               | No.           | 148,943      | 177,689      | 220,229      | 171,758      | 164,195      | 194,740      | 714,879  | 750,922 |
| Site occupancy rate                | per cent      | 25.4         | 30.1         | 36.4         | 28.1         | 25.8         | 30.4         | 30.7     | 30.1    |
| Takings from accommodation         | \$'000        | 996          | 1,589        | 2,595        | 1,435        | 1,036        | 1,818        | 6,395    | 6,884   |

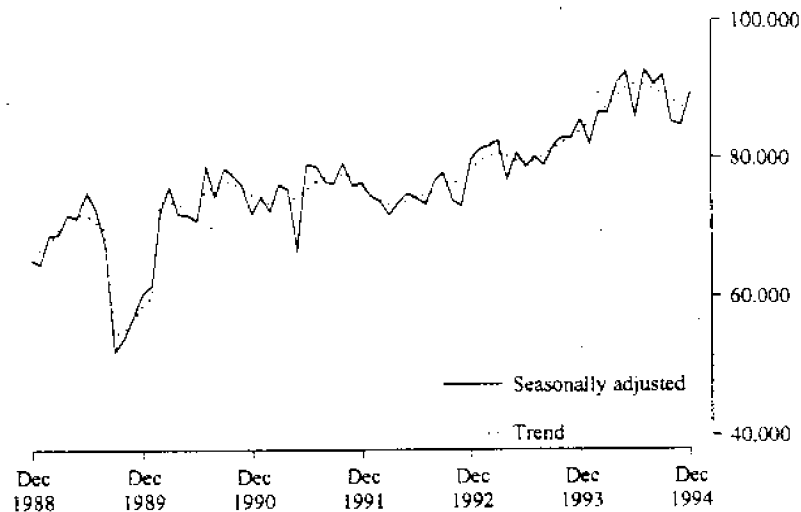
TABLE 3 — SUMMARY OF HOLIDAY FLATS, UNITS AND HOUSES, TASMANIA

| Particulars                   | Unit     | Quarter ended  |               |            |           | Year ended     |               |               |               |
|-------------------------------|----------|----------------|---------------|------------|-----------|----------------|---------------|---------------|---------------|
|                               |          | September 1993 | December 1993 | March 1994 | June 1994 | September 1994 | December 1994 | December 1993 | December 1994 |
| Letting entities              | No.      | 45             | 50            | 53         | 52        | 53             | 52            | ..            | ..            |
| Flats, units and houses       | No.      | 225            | 257           | 265        | 260       | 264            | 265           | ..            | ..            |
| Single bedroom                | No.      | 501            | 514           | 532        | 533       | 540            | 551           | ..            | ..            |
| Multiple bedroom              | No.      |                |               |            |           |                |               | ..            | ..            |
| Total flats, units and houses | No.      | 726            | 771           | 797        | 793       | 804            | 816           | ..            | ..            |
| Bed spaces                    | No.      | 3,189          | 3,366         | 3,511      | 3,486     | 3,533          | 3,578         | ..            | ..            |
| Employment (persons)          | No.      | 283            | 325           | 338        | 313       | 305            | 339           | ..            | ..            |
| Unit nights occupied          | No.      | 28,080         | 37,956        | 50,280     | 35,926    | 31,286         | 42,775        | 144,367       | 160,267       |
| Unit occupancy rate           | per cent | 42.0           | 53.5          | 70.1       | 49.8      | 42.5           | 57.0          | 53.4          | 54.8          |
| Unit lettings                 | No.      | 12,252         | 18,137        | 23,307     | 16,928    | 14,542         | 21,186        | 66,829        | 75,963        |
| Average length of stay        | days     | 2.3            | 2.1           | 2.2        | 2.1       | 2.2            | 2.0           | 2.2           | 2.1           |
| Takings from accommodation    | \$'000   | 1,694          | 2,450         | 3,725      | 2,455     | 2,044          | 3,036         | 9,607         | 11,261        |

TABLE 4 — SUMMARY OF VISITOR HOSTELS, TASMANIA

| Particulars                | Unit     | Quarter ended  |               |            |           | Year ended     |               |               |               |
|----------------------------|----------|----------------|---------------|------------|-----------|----------------|---------------|---------------|---------------|
|                            |          | September 1993 | December 1993 | March 1994 | June 1994 | September 1994 | December 1994 | December 1993 | December 1994 |
| Establishments             | No.      | 38             | 38            | 39         | 36        | 41             | 44            | ..            | ..            |
| Bed spaces                 | No.      | 1,430          | 1,471         | 1,487      | 1,450     | 1,712          | 1,813         | ..            | ..            |
| Employment (persons)       | No.      | 77             | 94            | 108        | 90        | 95             | 112           | ..            | ..            |
| Guest nights               | No.      | 8,286          | 18,937        | 35,706     | 15,114    | 12,399         | 28,376        | 75,118        | 91,595        |
| Bed occupancy rate         | per cent | 6.5            | 14.0          | 26.7       | 11.5      | 8.0            | 17.1          | 14.2          | 15.6          |
| Guest arrivals             | No.      | 5,454          | 13,418        | 24,992     | 9,441     | 7,518          | 17,106        | 53,891        | 59,057        |
| Average length of stay     | days     | 1.5            | 1.4           | 1.4        | 1.6       | 1.6            | 1.7           | 1.4           | 1.6           |
| Takings from accommodation | \$'000   | 87             | 215           | 406        | 175       | 145            | 377           | 858           | 1,103         |

## HOTEL/MOTEL ROOM NIGHTS



## HOLIDAY UNIT NIGHTS

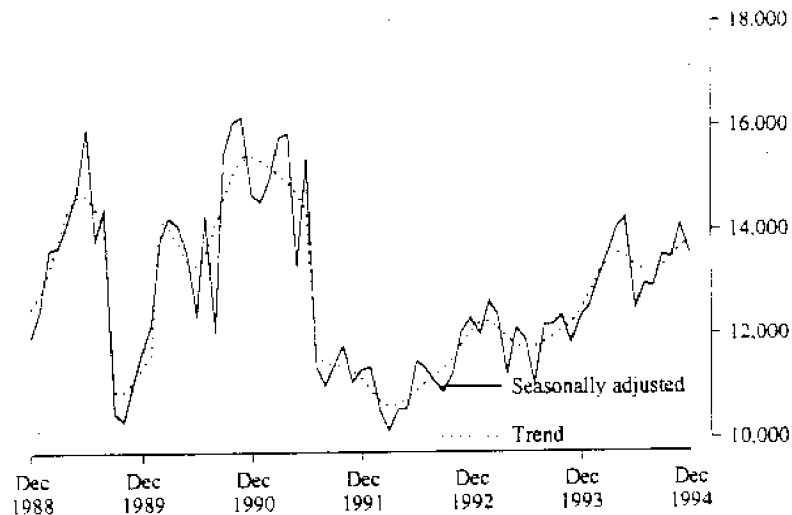


TABLE 5. HOTEL & MOTEL ETC. ROOM NIGHTS, HOLIDAY UNIT NIGHTS AND CARAVAN PARK SITE NIGHTS: SEASONALLY ADJUSTED AND TREND ESTIMATES

|      |           | Hotel, motel etc. with facilities,<br>room nights |        | Holiday unit nights    |        | Caravan park site nights |       |
|------|-----------|---|--------|------------------------|--------|--------------------------|-------|
|      |           | Seasonally<br>adjusted                            | Trend  | Seasonally<br>adjusted | Trend  | Seasonally<br>adjusted   | Trend |
| 1993 | January   | 81.311  | 79.586 | 11.993                 | 12.227 | n.a.                     | n.a.  |
|      | February  | 81.739  | 80.415 | 12.640                 | 12.254 | n.a.                     | n.a.  |
|      | March     | 82.458  | 80.648 | 12.387                 | 12.134 | n.a.                     | n.a.  |
|      | April     | 76.657  | 80.251 | 11.249                 | 11.944 | n.a.                     | n.a.  |
|      | May       | 80.737  | 79.624 | 12.133                 | 11.795 | n.a.                     | n.a.  |
|      | June      | 78.670  | 79.304 | 11.879                 | 11.736 | n.a.                     | n.a.  |
|      | July      | 80.240  | 79.630 | 11.022                 | 11.763 | n.a.                     | n.a.  |
|      | August    | 78.961  | 80.374 | 12.183                 | 11.850 | n.a.                     | n.a.  |
|      | September | 81.774  | 81.309 | 12.189                 | 11.965 | n.a.                     | n.a.  |
|      | October   | 82.982  | 82.178 | 12.377                 | 12.075 | n.a.                     | n.a.  |
|      | November  | 82.910  | 82.936 | 11.835                 | 12.211 | n.a.                     | n.a.  |
|      | December  | 83.522  | 83.932 | 12.343                 | 12.455 | n.a.                     | n.a.  |
| 1994 | January   | 82.019  | 85.054 | 12.573                 | 12.784 | n.a.                     | n.a.  |
|      | February  | 86.846  | 86.326 | 13.080                 | 13.144 | n.a.                     | n.a.  |
|      | March     | 86.570  | 87.638 | 13.540                 | 13.437 | n.a.                     | n.a.  |
|      | April     | 90.936  | 89.005 | 14.041                 | 13.558 | n.a.                     | n.a.  |
|      | May       | 92.534  | 90.186 | 14.225                 | 13.493 | n.a.                     | n.a.  |
|      | June      | 85.913  | 90.780 | 12.505                 | 13.334 | n.a.                     | n.a.  |
|      | July      | 92.897  | 90.624 | 12.974                 | 13.208 | n.a.                     | n.a.  |
|      | August    | 90.625  | 89.927 | 12.927                 | 13.198 | n.a.                     | n.a.  |
|      | September | 91.936  | 89.070 | 13.534                 | 13.315 | n.a.                     | n.a.  |
|      | October   | 85.202  | 88.249 | 13.469                 | 13.489 | n.a.                     | n.a.  |
|      | November  | 84.732  | 87.539 | 14.117                 | 13.653 | n.a.                     | n.a.  |
|      | December  | 89.479  | 87.196 | 13.550                 | 13.851 | n.a.                     | n.a.  |

TABLE 6 — HOTELS, MOTELS AND GUEST HOUSES WITH FACILITIES BY STAR GRADING, TASMANIA

| Particulars                                    | Licensed hotels with facilities | Motels and guest houses | Star grading      |         |         | Total   |
|--|---------------------------------|-------------------------|-------------------|---------|---------|---------|
|  |                                 |                         | 1, 2 and Ungraded | 3       | 4 and 5 |         |
| <b>ESTABLISHMENTS, CAPACITY AND EMPLOYMENT</b> |                                 |                         |                   |         |         |         |
| <i>December quarter 1993—</i>                  |                                 |                         |                   |         |         |         |
| Establishments                                 | 93                              | 86                      | 78                | 79      | 22      | 179     |
| Guest rooms                                    | 3,510                           | 1,832                   | 1,440             | 2,455   | 1,447   | 5,342   |
| Bed spaces                                     | 10,044                          | 5,625                   | 4,125             | 7,426   | 4,118   | 15,669  |
| Employment (persons)                           | 3,410                           | 774                     | 1,039             | 1,343   | 1,802   | 4,184   |
| <i>December quarter 1994—</i>                  |                                 |                         |                   |         |         |         |
| Establishments                                 | 92                              | 85                      | 74                | 80      | 21      | 177     |
| Guest rooms                                    | 3,526                           | 1,828                   | 1,387             | 2,508   | 1,459   | 5,354   |
| Bed spaces                                     | 9,921                           | 5,674                   | 3,948             | 7,441   | 4,206   | 15,595  |
| Employment (persons)                           | 3,576                           | 815                     | 1,007             | 1,376   | 2,008   | 4,391   |
| <b>ROOM NIGHTS OCCUPIED</b>                    |                                 |                         |                   |         |         |         |
| <i>December quarter 1993</i>                   | 173,628                         | 89,793                  | 55,251            | 113,833 | 96,333  | 265,421 |
| <i>1994—</i>                                   |                                 |                         |                   |         |         |         |
| October  | 59,237                          | 31,997                  | 17,646            | 42,348  | 31,236  | 91,230  |
| November                                       | 62,731                          | 34,142                  | 18,618            | 44,326  | 33,929  | 96,873  |
| December                                       | 55,616                          | 28,647                  | 16,808            | 35,628  | 31,827  | 84,263  |
| <i>December quarter 1994</i>                   | 177,380                         | 94,786                  | 53,072            | 122,302 | 96,992  | 272,366 |
| <b>ROOM OCCUPANCY RATES (per cent)</b>         |                                 |                         |                   |         |         |         |
| <i>December quarter 1993</i>                   | 54.4                            | 53.3                    | 41.7              | 50.4    | 72.4    | 54.0    |
| <i>1994—</i>                                   |                                 |                         |                   |         |         |         |
| October  | 54.2                            | 56.5                    | 41.1              | 54.5    | 69.1    | 55.0    |
| November                                       | 59.5                            | 62.3                    | 45.2              | 58.9    | 77.5    | 60.5    |
| December                                       | 51.1                            | 50.6                    | 39.5              | 45.8    | 70.4    | 50.9    |
| <i>December quarter 1994</i>                   | 54.9                            | 56.4                    | 41.9              | 53.0    | 72.3    | 55.4    |
| <b>GUEST NIGHTS</b>                            |                                 |                         |                   |         |         |         |
| <i>December quarter 1993</i>                   | 290,835                         | 159,561                 | 101,190           | 195,596 | 153,610 | 450,396 |
| <i>1994—</i>                                   |                                 |                         |                   |         |         |         |
| October  | 98,873                          | 58,847                  | 32,195            | 75,780  | 49,745  | 157,720 |
| November                                       | 101,875                         | 62,997                  | 34,197            | 77,419  | 53,216  | 164,832 |
| December                                       | 101,558                         | 53,823                  | 33,772            | 65,202  | 56,407  | 155,381 |
| <i>December quarter 1994</i>                   | 302,266                         | 175,667                 | 100,164           | 218,401 | 159,368 | 477,933 |
| <b>BED OCCUPANCY RATES (per cent)</b>          |                                 |                         |                   |         |         |         |
| <i>December quarter 1993</i>                   | 31.5                            | 30.8                    | 26.7              | 28.6    | 40.5    | 31.2    |
| <i>1994—</i>                                   |                                 |                         |                   |         |         |         |
| October  | 32.2                            | 33.5                    | 26.3              | 32.9    | 38.2    | 32.6    |
| November                                       | 34.3                            | 37.0                    | 29.0              | 34.7    | 42.2    | 34.3    |
| December                                       | 33.1                            | 30.6                    | 27.7              | 28.3    | 43.3    | 32.2    |
| <i>December quarter 1994</i>                   | 33.2                            | 33.7                    | 27.7              | 31.9    | 41.2    | 33.3    |
| <b>GUEST ARRIVALS</b>                          |                                 |                         |                   |         |         |         |
| <i>December quarter 1993</i>                   | 158,903                         | 90,835                  | 63,773            | 114,413 | 71,552  | 249,738 |
| <i>1994—</i>                                   |                                 |                         |                   |         |         |         |
| October  | 56,530                          | 34,435                  | 21,443            | 46,115  | 23,407  | 90,965  |
| November                                       | 58,109                          | 37,317                  | 22,576            | 48,382  | 24,468  | 95,425  |
| December                                       | 55,438                          | 33,584                  | 23,177            | 40,004  | 24,841  | 89,022  |
| <i>December quarter 1994</i>                   | 170,077                         | 105,336                 | 68,196            | 134,501 | 72,716  | 275,413 |
| <b>AVERAGE LENGTH OF STAY (days)</b>           |                                 |                         |                   |         |         |         |
| <i>December quarter 1993</i>                   | 1.8                             | 1.8                     | 1.6               | 1.7     | 2.1     | 1.8     |
| <i>December quarter 1994</i>                   | 1.8                             | 1.7                     | 1.5               | 1.6     | 2.2     | 1.7     |
| <b>TAKINGS FROM ACCOMMODATION (\$'000)</b>     |                                 |                         |                   |         |         |         |
| <i>December quarter 1993</i>                   | 13,366                          | 3,294                   | 2,918             | 6,627   | 9,115   | 18,661  |
| <i>1994—</i>                                   |                                 |                         |                   |         |         |         |
| October  | 4,552                           | 1,979                   | 996               | 2,551   | 2,984   | 6,552   |
| November                                       | 4,937                           | 2,134                   | 1,097             | 3,713   | 3,261   | 7,071   |
| December                                       | 4,699                           | 1,858                   | 1,050             | 2,334   | 3,173   | 6,557   |
| <i>December quarter 1994</i>                   | 14,188                          | 3,971                   | 3,143             | 7,598   | 9,418   | 20,159  |



TABLE 7—HOTELS, MOTELS AND GUEST HOUSES WITH FACILITIES BY ESTABLISHMENT SIZE, TASMANIA

| Particulars                             | Establishment size (No. of rooms) |        |        |         |         |         | Total   |
|---|-----------------------------------|--------|--------|---------|---------|---------|---------|
|   | 5-9                               | 10-15  | 16-25  | 26-50   | 51-100  | 101+    |         |
| ESTABLISHMENTS, CAPACITY AND EMPLOYMENT |                                   |        |        |         |         |         |         |
| <i>December quarter 1993—</i>           |                                   |        |        |         |         |         |         |
| Establishments                          | 45                                | 27     | 31     | 50      | 18      | 8       | 179     |
| Guest rooms                             | 310                               | 307    | 634    | 1,700   | 1,143   | 1,248   | 5,342   |
| Bed spaces                              | 779                               | 843    | 1,873  | 5,050   | 3,659   | 3,465   | 15,669  |
| Employment (persons)                    | 329                               | 312    | 384    | 925     | 602     | 1,632   | 4,184   |
| <i>December quarter 1994—</i>           |                                   |        |        |         |         |         |         |
| Establishments                          | 40                                | 30     | 33     | 47      | 19      | 8       | 177     |
| Guest rooms                             | 279                               | 339    | 677    | 1,607   | 1,203   | 1,249   | 5,354   |
| Bed spaces                              | 727                               | 913    | 2,018  | 4,792   | 3,681   | 3,464   | 15,595  |
| Employment (persons)                    | 245                               | 324    | 419    | 896     | 727     | 1,780   | 4,391   |
| ROOM NIGHTS OCCUPIED                    |                                   |        |        |         |         |         |         |
| <i>December quarter 1993</i>            | 12,167                            | 12,380 | 24,240 | 80,173  | 54,413  | 81,848  | 265,421 |
| <i>1994—</i>                            |                                   |        |        |         |         |         |         |
| October                                 | 3,931                             | 4,512  | 9,526  | 26,831  | 20,806  | 25,624  | 91,230  |
| November                                | 4,240                             | 5,058  | 9,680  | 28,559  | 21,077  | 28,259  | 96,873  |
| December                                | 4,037                             | 4,351  | 8,113  | 22,270  | 18,847  | 26,645  | 84,263  |
| <i>December quarter 1994</i>            | 12,208                            | 13,921 | 27,319 | 77,660  | 60,730  | 80,528  | 272,366 |
| ROOM OCCUPANCY RATES (per cent)         |                                   |        |        |         |         |         |         |
| <i>December quarter 1993</i>            | 42.7                              | 44.5   | 41.6   | 51.3    | 51.7    | 71.3    | 54.0    |
| <i>1994—</i>                            |                                   |        |        |         |         |         |         |
| October                                 | 45.5                              | 43.0   | 45.4   | 53.9    | 55.8    | 66.2    | 55.0    |
| November                                | 50.7                              | 51.7   | 47.7   | 59.2    | 58.4    | 75.4    | 60.5    |
| December                                | 46.7                              | 43.1   | 38.7   | 44.7    | 50.5    | 68.8    | 50.9    |
| <i>December quarter 1994</i>            | 47.6                              | 45.8   | 43.9   | 52.5    | 54.9    | 70.1    | 55.4    |
| GUEST NIGHTS                            |                                   |        |        |         |         |         |         |
| <i>December quarter 1993</i>            | 19,662                            | 21,149 | 43,137 | 140,279 | 99,373  | 126,796 | 450,396 |
| <i>1994—</i>                            |                                   |        |        |         |         |         |         |
| October                                 | 6,403                             | 7,482  | 17,651 | 47,296  | 38,297  | 40,591  | 157,720 |
| November                                | 6,956                             | 8,488  | 17,274 | 49,543  | 38,376  | 44,195  | 164,832 |
| December                                | 6,336                             | 7,819  | 15,790 | 41,307  | 37,182  | 46,447  | 155,381 |
| <i>December quarter 1994</i>            | 20,195                            | 23,789 | 50,715 | 138,146 | 113,855 | 131,233 | 477,933 |
| BED OCCUPANCY RATES (per cent)          |                                   |        |        |         |         |         |         |
| <i>December quarter 1993</i>            | 27.4                              | 27.3   | 25.0   | 30.2    | 29.5    | 39.8    | 31.2    |
| <i>1994—</i>                            |                                   |        |        |         |         |         |         |
| October                                 | 28.4                              | 26.5   | 28.2   | 31.8    | 33.6    | 37.8    | 32.6    |
| November                                | 31.9                              | 31.7   | 28.5   | 34.5    | 34.8    | 42.5    | 35.3    |
| December                                | 30.3                              | 28.2   | 25.2   | 27.8    | 32.6    | 43.3    | 32.3    |
| <i>December quarter 1994</i>            | 30.2                              | 28.8   | 27.3   | 31.3    | 33.6    | 41.2    | 33.3    |
| GUEST ARRIVALS                          |                                   |        |        |         |         |         |         |
| <i>December quarter 1993</i>            | 12,656                            | 12,392 | 26,148 | 85,103  | 59,197  | 54,242  | 249,738 |
| <i>1994—</i>                            |                                   |        |        |         |         |         |         |
| October                                 | 4,075                             | 4,283  | 10,206 | 29,528  | 24,622  | 18,151  | 90,965  |
| November                                | 4,401                             | 5,181  | 10,058 | 30,940  | 25,680  | 19,166  | 95,426  |
| December                                | 4,177                             | 4,696  | 9,435  | 27,230  | 24,410  | 18,774  | 89,022  |
| <i>December quarter 1994</i>            | 12,953                            | 14,160 | 29,799 | 87,698  | 74,712  | 56,091  | 275,413 |
| AVERAGE LENGTH OF STAY (days)           |                                   |        |        |         |         |         |         |
| <i>December quarter 1993</i>            | 1.6                               | 1.7    | 1.6    | 1.6     | 1.7     | 2.3     | 1.8     |
| <i>December quarter 1994</i>            | 1.6                               | 1.7    | 1.7    | 1.6     | 1.5     | 2.3     | 1.7     |
| TAKINGS FROM ACCOMMODATION (\$'000)     |                                   |        |        |         |         |         |         |
| <i>December quarter 1993</i>            | 631                               | 620    | 1,336  | 4,621   | 3,822   | 7,630   | 18,661  |
| <i>1994—</i>                            |                                   |        |        |         |         |         |         |
| October                                 | 225                               | 221    | 538    | 1,608   | 1,541   | 2,400   | 6,532   |
| November                                | 244                               | 248    | 539    | 1,690   | 1,657   | 2,693   | 7,071   |
| December                                | 240                               | 237    | 494    | 1,385   | 1,606   | 2,595   | 6,557   |
| <i>December quarter 1994</i>            | 708                               | 706    | 1,570  | 4,683   | 4,804   | 7,688   | 20,159  |

TABLE 8 — HOTELS, MOTELS AND GUEST HOUSES WITH FACILITIES BY STATISTICAL DIVISION,  
TASMANIA

| Particulars                                    | Greater Hobart (SD)             |                         |         | Southern (SD)                   |                         |        | Northern (SD)                   |                         |         | Total |
|--|---------------------------------|-------------------------|---------|---------------------------------|-------------------------|--------|---------------------------------|-------------------------|---------|-------|
|  | Licensed hotels with facilities | Motels and guest houses | Total   | Licensed hotels with facilities | Motels and guest houses | Total  | Licensed hotels with facilities | Motels and guest houses | Total   |       |
| <b>ESTABLISHMENTS, CAPACITY AND EMPLOYMENT</b> |                                 |                         |         |                                 |                         |        |                                 |                         |         |       |
| <i>December quarter 1993—</i>                  |                                 |                         |         |                                 |                         |        |                                 |                         |         |       |
| Establishments                                 | 26                              | 28                      | 53      | 14                              | 9                       | 23     | 32                              | 22                      | 54      |       |
| Guest rooms                                    | 1,232                           | 649                     | 1,881   | 476                             | 98                      | 574    | 1,093                           | 448                     | 1,541   |       |
| Bed spaces                                     | 3,211                           | 1,933                   | 5,144   | 1,433                           | 357                     | 1,790  | 3,404                           | 1,505                   | 4,909   |       |
| Employment (persons)                           | 1,551                           | 251                     | 1,802   | 234                             | 46                      | 280    | 1,056                           | 138                     | 1,194   |       |
| <i>December quarter 1994—</i>                  |                                 |                         |         |                                 |                         |        |                                 |                         |         |       |
| Establishments                                 | 24                              | 27                      | 51      | 14                              | 10                      | 24     | 31                              | 22                      | 53      |       |
| Guest rooms                                    | 1,224                           | 648                     | 1,872   | 479                             | 101                     | 580    | 1,092                           | 426                     | 1,518   |       |
| Bed spaces                                     | 3,199                           | 1,985                   | 5,184   | 1,456                           | 360                     | 1,816  | 3,239                           | 1,407                   | 4,646   |       |
| Employment (persons)                           | 1,601                           | 287                     | 1,888   | 260                             | 50                      | 310    | 1,142                           | 139                     | 1,281   |       |
| <b>ROOM NIGHTS OCCUPIED</b>                    |                                 |                         |         |                                 |                         |        |                                 |                         |         |       |
| <i>December quarter 1993</i>                   | 76,698                          | 37,685                  | 114,353 | 16,746                          | 3,621                   | 20,367 | 52,736                          | 29,417                  | 73,153  |       |
| <i>1994—</i>                                   |                                 |                         |         |                                 |                         |        |                                 |                         |         |       |
| October  | 25,376                          | 13,151                  | 38,527  | 5,880                           | 1,272                   | 7,152  | 18,110                          | 7,453                   | 25,563  |       |
| November                                       | 27,269                          | 14,192                  | 41,461  | 6,263                           | 1,284                   | 7,547  | 18,801                          | 7,495                   | 26,296  |       |
| December                                       | 24,752                          | 11,009                  | 35,761  | 5,405                           | 1,473                   | 6,878  | 16,547                          | 6,070                   | 22,617  |       |
| <i>December quarter 1994</i>                   | 77,397                          | 38,352                  | 115,749 | 17,548                          | 4,029                   | 21,577 | 53,458                          | 21,018                  | 74,476  |       |
| <b>ROOM OCCUPANCY RATES (per cent)</b>         |                                 |                         |         |                                 |                         |        |                                 |                         |         |       |
| <i>December quarter 1993</i>                   | 67.6                            | 63.1                    | 66.1    | 38.2                            | 40.2                    | 38.6   | 52.4                            | 49.5                    | 51.6    |       |
| <i>1994—</i>                                   |                                 |                         |         |                                 |                         |        |                                 |                         |         |       |
| October  | 66.9                            | 65.5                    | 66.4    | 39.6                            | 40.6                    | 39.8   | 53.5                            | 56.4                    | 54.3    |       |
| November                                       | 75.1                            | 73.0                    | 74.3    | 43.6                            | 42.4                    | 43.4   | 57.4                            | 58.6                    | 57.7    |       |
| December                                       | 65.9                            | 54.8                    | 62.1    | 36.4                            | 47.0                    | 38.3   | 48.9                            | 46.0                    | 48.1    |       |
| <i>December quarter 1994</i>                   | 69.2                            | 64.3                    | 67.5    | 39.8                            | 43.4                    | 40.4   | 53.2                            | 53.6                    | 53.3    |       |
| <b>GUEST NIGHTS</b>                            |                                 |                         |         |                                 |                         |        |                                 |                         |         |       |
| <i>December quarter 1993</i>                   | 123,226                         | 67,129                  | 190,355 | 33,461                          | 7,871                   | 41,332 | 84,260                          | 37,001                  | 121,261 |       |
| <i>1994—</i>                                   |                                 |                         |         |                                 |                         |        |                                 |                         |         |       |
| October  | 40,837                          | 23,896                  | 64,733  | 11,773                          | 2,685                   | 14,458 | 29,658                          | 14,098                  | 43,756  |       |
| November                                       | 42,846                          | 25,492                  | 68,338  | 11,947                          | 2,784                   | 14,731 | 30,256                          | 13,711                  | 43,967  |       |
| December                                       | 42,376                          | 21,142                  | 63,718  | 12,749                          | 3,302                   | 16,051 | 30,094                          | 11,703                  | 41,797  |       |
| <i>December quarter 1994</i>                   | 126,259                         | 70,530                  | 196,789 | 36,469                          | 8,771                   | 45,240 | 90,008                          | 39,512                  | 129,520 |       |
| <b>BED OCCUPANCY RATES (per cent)</b>          |                                 |                         |         |                                 |                         |        |                                 |                         |         |       |
| <i>December quarter 1993</i>                   | 41.7                            | 37.7                    | 40.2    | 25.4                            | 24.0                    | 25.1   | 36.9                            | 26.7                    | 26.8    |       |
| <i>1994—</i>                                   |                                 |                         |         |                                 |                         |        |                                 |                         |         |       |
| October  | 41.2                            | 38.8                    | 40.3    | 26.1                            | 24.1                    | 25.7   | 29.5                            | 32.3                    | 30.4    |       |
| November                                       | 44.9                            | 42.8                    | 44.1    | 27.4                            | 25.8                    | 27.0   | 31.1                            | 32.5                    | 31.5    |       |
| December                                       | 43.2                            | 34.4                    | 39.8    | 28.2                            | 39.6                    | 28.5   | 30.0                            | 26.8                    | 29.0    |       |
| <i>December quarter 1994</i>                   | 43.1                            | 38.6                    | 41.4    | 27.2                            | 26.5                    | 27.1   | 30.2                            | 30.5                    | 30.3    |       |
| <b>GUEST ARRIVALS</b>                          |                                 |                         |         |                                 |                         |        |                                 |                         |         |       |
| <i>December quarter 1993</i>                   | 47,326                          | 33,487                  | 80,813  | 26,606                          | 3,967                   | 32,573 | 51,892                          | 21,078                  | 72,970  |       |
| <i>1994—</i>                                   |                                 |                         |         |                                 |                         |        |                                 |                         |         |       |
| October  | 17,124                          | 10,929                  | 28,053  | 9,804                           | 1,816                   | 11,620 | 17,956                          | 8,188                   | 26,144  |       |
| November                                       | 18,130                          | 12,127                  | 30,247  | 9,778                           | 2,148                   | 11,926 | 17,879                          | 8,066                   | 25,945  |       |
| December                                       | 16,833                          | 11,471                  | 28,304  | 9,496                           | 2,425                   | 11,921 | 17,264                          | 6,912                   | 24,176  |       |
| <i>December quarter 1994</i>                   | 52,077                          | 34,527                  | 86,604  | 29,078                          | 6,389                   | 35,467 | 53,999                          | 23,166                  | 76,265  |       |
| <b>AVERAGE LENGTH OF STAY (days)</b>           |                                 |                         |         |                                 |                         |        |                                 |                         |         |       |
| <i>December quarter 1993</i>                   | 2.6                             | 2.0                     | 2.4     | 1.3                             | 1.3                     | 1.3    | 1.6                             | 1.8                     | 1.7     |       |
| <i>December quarter 1994</i>                   | 2.4                             | 2.0                     | 2.3     | 1.3                             | 1.4                     | 1.3    | 1.7                             | 1.7                     | 1.7     |       |
| <b>TAKINGS FROM ACCOMMODATION (\$'000)</b>     |                                 |                         |         |                                 |                         |        |                                 |                         |         |       |
| <i>December quarter 1993</i>                   | 6,843                           | 2,256                   | 9,100   | 915                             | 330                     | 1,146  | 3,641                           | 1,142                   | 4,783   |       |
| <i>1994—</i>                                   |                                 |                         |         |                                 |                         |        |                                 |                         |         |       |
| October  | 2,342                           | 815                     | 3,057   | 322                             | 88                      | 410    | 1,265                           | 450                     | 1,715   |       |
| November                                       | 2,442                           | 856                     | 3,298   | 364                             | 98                      | 462    | 1,359                           | 447                     | 1,806   |       |
| December                                       | 2,319                           | 726                     | 3,045   | 356                             | 114                     | 469    | 1,316                           | 371                     | 1,687   |       |
| <i>December quarter 1994</i>                   | 7,003                           | 2,396                   | 9,400   | 1,041                           | 300                     | 1,342  | 3,940                           | 1,269                   | 5,209   |       |

TABLE 8 — HOTELS, MOTELS AND GUEST HOUSES WITH FACILITIES BY STATISTICAL DIVISION,  
TASMANIA—continued

| Particulars                             | Mersey-Lyell (SD)               |                         |         | Total Tasmania                  |                         | East Coast (a) |        |
|---|---------------------------------|-------------------------|---------|---------------------------------|-------------------------|----------------|--------|
|   | Licensed hotels with facilities | Motels and guest houses | Total   | Licensed hotels with facilities | Motels and guest houses | Total          | Total  |
| ESTABLISHMENTS, CAPACITY AND EMPLOYMENT |                                 |                         |         |                                 |                         |                |        |
| <i>December quarter 1993—</i>           |                                 |                         |         |                                 |                         |                |        |
| Establishments                          | 22                              | 27                      | 49      | 93                              | 86                      | 179            | 14     |
| Guest rooms                             | 709                             | 637                     | 1,346   | 3,510                           | 1,832                   | 5,342          | 447    |
| Bed spaces                              | 1,996                           | 1,330                   | 3,826   | 10,044                          | 5,625                   | 15,669         | 1,423  |
| Employment (persons)                    | 569                             | 339                     | 908     | 3,410                           | 774                     | 4,184          | 231    |
| <i>December quarter 1994—</i>           |                                 |                         |         |                                 |                         |                |        |
| Establishments                          | 23                              | 26                      | 49      | 92                              | 85                      | 177            | 14     |
| Guest rooms                             | 731                             | 653                     | 1,384   | 3,526                           | 1,828                   | 5,354          | 451    |
| Bed spaces                              | 2,027                           | 1,922                   | 3,949   | 9,921                           | 5,674                   | 15,595         | 1,451  |
| Employment (persons)                    | 573                             | 339                     | 912     | 3,576                           | 815                     | 4,391          | 251    |
| ROOM NIGHTS OCCUPIED                    |                                 |                         |         |                                 |                         |                |        |
| <i>December quarter 1993</i>            | 29,478                          | 28,070                  | 57,548  | 175,628                         | 89,793                  | 265,421        | 15,382 |
| <i>1994—</i>                            |                                 |                         |         |                                 |                         |                |        |
| October                                 | 9,867                           | 10,121                  | 19,988  | 59,333                          | 31,997                  | 91,230         | 5,273  |
| November                                | 10,398                          | 11,171                  | 21,569  | 62,731                          | 34,142                  | 96,873         | 5,640  |
| December                                | 8,912                           | 10,095                  | 19,007  | 55,616                          | 28,647                  | 84,263         | 5,044  |
| <i>December quarter 1994</i>            | 29,177                          | 31,387                  | 60,564  | 177,580                         | 94,786                  | 272,366        | 15,957 |
| ROOM OCCUPANCY RATES (per cent)         |                                 |                         |         |                                 |                         |                |        |
| <i>December quarter 1993</i>            | 45.2                            | 47.9                    | 46.5    | 54.4                            | 53.3                    | 54.0           | 37.4   |
| <i>1994—</i>                            |                                 |                         |         |                                 |                         |                |        |
| October                                 | 43.5                            | 50.0                    | 46.6    | 54.2                            | 56.5                    | 55.0           | 37.7   |
| November                                | 47.4                            | 57.0                    | 51.9    | 59.5                            | 62.3                    | 60.5           | 41.7   |
| December                                | 39.3                            | 49.9                    | 44.3    | 51.1                            | 50.6                    | 50.9           | 36.1   |
| <i>December quarter 1994</i>            | 43.4                            | 52.2                    | 47.6    | 54.9                            | 56.4                    | 55.4           | 38.5   |
| GUEST NIGHTS                            |                                 |                         |         |                                 |                         |                |        |
| <i>December quarter 1993</i>            | 49,888                          | 47,560                  | 97,448  | 290,835                         | 159,561                 | 450,396        | 31,482 |
| <i>1994—</i>                            |                                 |                         |         |                                 |                         |                |        |
| October                                 | 16,605                          | 18,168                  | 34,773  | 98,873                          | 58,847                  | 157,720        | 10,616 |
| November                                | 16,786                          | 21,010                  | 37,796  | 101,535                         | 62,997                  | 164,832        | 10,879 |
| December                                | 16,139                          | 17,676                  | 33,815  | 101,558                         | 53,823                  | 155,381        | 12,009 |
| <i>December quarter 1994</i>            | 49,530                          | 56,854                  | 106,384 | 302,266                         | 175,667                 | 477,933        | 33,504 |
| BED OCCUPANCY RATES (per cent)          |                                 |                         |         |                                 |                         |                |        |
| <i>December quarter 1993</i>            | 27.2                            | 28.2                    | 27.7    | 31.5                            | 30.8                    | 31.2           | 24.0   |
| <i>1994—</i>                            |                                 |                         |         |                                 |                         |                |        |
| October                                 | 26.4                            | 30.5                    | 28.4    | 32.2                            | 33.5                    | 32.6           | 27.6   |
| November                                | 27.6                            | 36.4                    | 31.9    | 34.3                            | 37.9                    | 35.7           | 25.0   |
| December                                | 25.7                            | 29.7                    | 27.6    | 33.1                            | 30.6                    | 32.2           | 26.7   |
| <i>December quarter 1994</i>            | 26.6                            | 32.2                    | 29.3    | 33.2                            | 33.7                    | 33.3           | 25.1   |
| GUEST ARRIVALS                          |                                 |                         |         |                                 |                         |                |        |
| <i>December quarter 1993</i>            | 33,079                          | 30,303                  | 63,382  | 158,903                         | 90,835                  | 249,738        | 24,982 |
| <i>1994—</i>                            |                                 |                         |         |                                 |                         |                |        |
| October                                 | 11,646                          | 13,502                  | 25,148  | 56,530                          | 34,435                  | 90,965         | 8,507  |
| November                                | 12,332                          | 14,976                  | 27,308  | 58,109                          | 37,317                  | 95,426         | 8,755  |
| December                                | 11,845                          | 12,776                  | 24,621  | 55,438                          | 33,584                  | 89,022         | 8,644  |
| <i>December quarter 1994</i>            | 35,823                          | 41,254                  | 77,077  | 170,077                         | 105,336                 | 275,413        | 25,906 |
| AVERAGE LENGTH OF STAY (days)           |                                 |                         |         |                                 |                         |                |        |
| <i>December quarter 1993</i>            | 1.5                             | 1.6                     | 1.5     | 1.8                             | 1.8                     | 1.8            | 1.3    |
| <i>December quarter 1994</i>            | 1.4                             | 1.4                     | 1.4     | 1.8                             | 1.7                     | 1.7            | 1.3    |
| TAKINGS FROM ACCOMMODATION (\$'000)     |                                 |                         |         |                                 |                         |                |        |
| <i>December quarter 1993</i>            | 1,966                           | 1,666                   | 3,632   | 13,366                          | 5,294                   | 18,661         | 843    |
| <i>1994—</i>                            |                                 |                         |         |                                 |                         |                |        |
| October                                 | 723                             | 626                     | 1,349   | 4,552                           | 1,979                   | 6,532          | 278    |
| November                                | 772                             | 732                     | 1,504   | 4,937                           | 2,134                   | 7,071          | 313    |
| December                                | 708                             | 647                     | 1,356   | 4,697                           | 1,858                   | 6,557          | 325    |
| <i>December quarter 1994</i>            | 2,204                           | 2,005                   | 4,209   | 14,188                          | 5,971                   | 20,159         | 917    |

(a) The East Coast Tourist Area comprises Glamorgan/Spring Bay (M) and Break O' Day (M).

TABLE 9—HOTELS, MOTELS AND GUEST HOUSES WITH FACILITIES: STATISTICAL DIVISIONS

| Statistical Divisions<br>and selected<br>Statistical<br>Local Areas | Establish-<br>ments | Guest<br>rooms | Bed<br>spaces | Employ-<br>ment<br>(persons) | Room nights occupied |        |        |             | Room occupancy rates (per cent) |      |      |             |
|---|---------------------|----------------|---------------|------------------------------|----------------------|--------|--------|-------------|---------------------------------|------|------|-------------|
|   |                     |                |               |                              | Oct.                 | Nov.   | Dec.   | Dec.<br>qtr | Oct.                            | Nov. | Dec. | Dec.<br>qtr |
|   |                     |                |               |                              | Clarence (C)         | 4      | 54     | 153         | 57                              | 809  | 986  | 802         |
| Glenorchy (C)   | 7                   | 174            | 448           | 103                          | 2,925                | 2,868  | 2,046  | 7,839       | 54.5                            | 59.4 | 41.0 | 51.6        |
| Hobart (C)  |                     |                |               |                              |                      |        |        |             |                                 |      |      |             |
| Inner   | 6                   | 432            | 1,078         | 214                          | 8,730                | 9,574  | 7,044  | 25,348      | 65.2                            | 73.9 | 52.6 | 63.8        |
| Remainder   | 29                  | 1,139          | 3,297         | 1,454                        | 25,292               | 27,002 | 25,153 | 77,447      | 71.6                            | 79.0 | 71.2 | 73.9        |
| Total   | 35                  | 1,571          | 4,375         | 1,668                        | 34,022               | 36,576 | 32,197 | 102,795     | 69.9                            | 77.6 | 66.1 | 71.1        |
| Balance   | 5                   | 73             | 208           | 60                           | 771                  | 1,031  | 716    | 2,518       | 34.1                            | 47.1 | 34.6 | 37.5        |
| Greater Hobart (SD)   | 31                  | 1,872          | 5,184         | 1,888                        | 38,527               | 41,461 | 35,761 | 115,749     | 66.4                            | 74.3 | 62.1 | 67.5        |
| Central Highlands (M)   | 6                   | 51             | 132           | 37                           | 609                  | 639    | 713    | 1,961       | 38.5                            | 41.8 | 45.1 | 41.8        |
| Glamorgan/Spring Bay (M)  | 9                   | 290            | 1,026         | 154                          | 3,699                | 3,776  | 3,543  | 11,018      | 41.1                            | 43.4 | 39.4 | 41.3        |
| Tasman (M)  | 6                   | 135            | 407           | 89                           | 2,082                | 2,363  | 1,925  | 6,370       | 49.7                            | 58.3 | 46.0 | 51.3        |
| Balance   | 3                   | 104            | 251           | 30                           | 762                  | 769    | 697    | 2,228       | 23.6                            | 24.6 | 21.6 | 23.3        |
| Southern (SD)   | 24                  | 580            | 1,816         | 310                          | 7,152                | 7,547  | 6,878  | 21,577      | 39.8                            | 43.4 | 38.3 | 40.4        |
| Break O'Day (M)   | 5                   | 161            | 425           | 97                           | 1,574                | 1,864  | 1,501  | 4,939       | 31.5                            | 38.6 | 30.1 | 33.3        |
| Launceston (C)  |                     |                |               |                              |                      |        |        |             |                                 |      |      |             |
| Inner   | 10                  | 472            | 1,341         | 351                          | 8,642                | 9,504  | 8,397  | 26,543      | 59.1                            | 67.1 | 57.4 | 61.1        |
| Parts B & C   | 23                  | 592            | 2,017         | 308                          | 11,152               | 10,298 | 8,433  | 29,883      | 60.8                            | 58.0 | 46.0 | 54.9        |
| Total   | 33                  | 1,064          | 3,358         | 659                          | 19,794               | 19,802 | 16,830 | 56,426      | 60.0                            | 62.0 | 51.0 | 57.6        |
| Northern Midlands (M) — Pts A & B                                   | 3                   | 25             | 67            | 21                           | 364                  | 441    | 241    | 1,046       | 47.0                            | 58.8 | 31.1 | 45.5        |
| Balance   | 12                  | 268            | 796           | 504                          | 3,831                | 4,189  | 4,045  | 12,065      | 46.1                            | 52.1 | 48.7 | 48.9        |
| Northern (SD)   | 53                  | 1,518          | 4,646         | 1,281                        | 25,563               | 26,296 | 22,617 | 74,476      | 54.3                            | 57.7 | 48.1 | 53.3        |
| Burnie (C) — Pts A & B  | 7                   | 222            | 541           | 136                          | 3,355                | 3,325  | 2,236  | 8,916       | 48.8                            | 49.9 | 32.5 | 43.7        |
| Central Coast (M) — Pts A & B                                       | 5                   | 115            | 285           | 81                           | 1,149                | 1,533  | 1,021  | 3,703       | 32.2                            | 44.4 | 28.6 | 35.0        |
| Circular Head (M)   | 3                   | 94             | 239           | 87                           | 1,516                | 1,741  | 1,295  | 4,552       | 52.0                            | 61.7 | 44.4 | 52.6        |
| Devonport (C)   | 8                   | 237            | 690           | 135                          | 3,506                | 4,009  | 2,966  | 10,481      | 47.7                            | 56.4 | 40.4 | 48.1        |
| Waratah/Wynyard (M) — Pts A & B                                     | 8                   | 143            | 397           | 75                           | 1,207                | 1,213  | 1,312  | 3,732       | 27.2                            | 28.3 | 29.6 | 28.4        |
| West Coast (M)  | 11                  | 420            | 1,225         | 239                          | 5,971                | 6,415  | 6,427  | 18,813      | 45.9                            | 50.9 | 49.4 | 48.7        |
| Balance   | 7                   | 153            | 572           | 159                          | 3,284                | 3,333  | 3,750  | 10,367      | 69.2                            | 72.5 | 79.1 | 73.7        |
| Mersey-Lyell (SD)   | 49                  | 1,384          | 3,949         | 912                          | 19,988               | 21,569 | 19,007 | 60,564      | 46.6                            | 51.9 | 44.3 | 47.6        |
| Total Tasmania  | 177                 | 5,354          | 15,595        | 4,391                        | 91,230               | 96,873 | 84,263 | 272,366     | 55.0                            | 60.5 | 50.9 | 53.4        |

## AND SELECTED STATISTICAL LOCAL AREAS, TASMANIA, DECEMBER QUARTER 1994

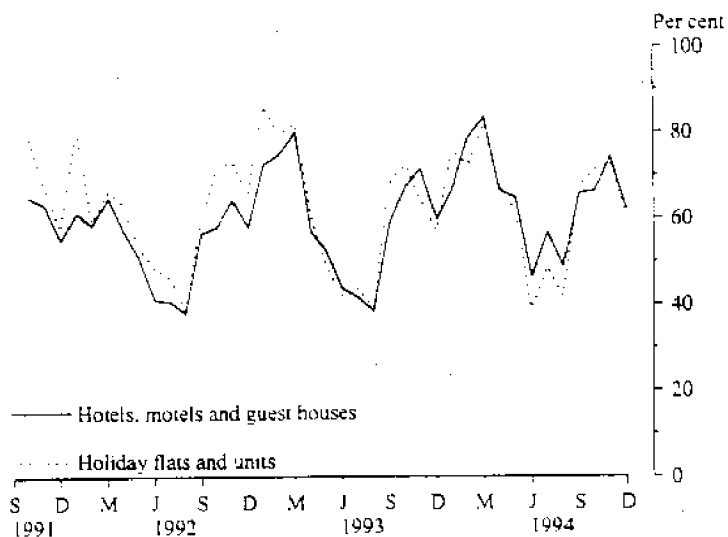
| <i>Guest nights</i> |             |             |                 | <i>Guest arrivals</i> |             |             |                 | <i>Takings from accommodation (\$'000)</i> |             |             |                 |
|---------------------|-------------|-------------|-----------------|-----------------------|-------------|-------------|-----------------|--|-------------|-------------|-----------------|
| <i>Oct.</i>         | <i>Nov.</i> | <i>Dec.</i> | <i>Dec. qtr</i> | <i>Oct.</i>           | <i>Nov.</i> | <i>Dec.</i> | <i>Dec. qtr</i> | <i>Oct.</i>                                | <i>Nov.</i> | <i>Dec.</i> | <i>Dec. qtr</i> |
| 1,549               | 1,886       | 1,584       | 5,019           | 954                   | 1,133       | 956         | 3,043           | 49   | 56          | 62          | 167             |
| 4,928               | 4,869       | 3,647       | 13,444          | 2,424                 | 2,356       | 2,029       | 6,809           | 138  | 148         | 107         | 393             |
| 14,465              | 15,461      | 11,723      | 41,649          | 7,360                 | 8,362       | 5,820       | 21,542          | 600  | 682         | 502         | 1,785           |
| 42,330              | 44,293      | 45,363      | 131,986         | 16,575                | 17,482      | 18,624      | 52,681          | 2,225                                      | 2,349       | 2,329       | 6,902           |
| 56,795              | 59,754      | 57,086      | 173,635         | 23,935                | 25,844      | 24,444      | 74,223          | 3,825                                      | 3,031       | 2,831       | 9,687           |
| 1,461               | 1,829       | 1,401       | 4,691           | 740                   | 914         | 875         | 2,529           | 46   | 63          | 44          | 153             |
| 64,733              | 68,338      | 63,718      | 196,789         | 28,053                | 30,247      | 28,304      | 86,604          | 3,057                                      | 3,298       | 3,045       | 9,400           |
| 1,112               | 1,312       | 1,538       | 3,962           | 646                   | 827         | 986         | 2,459           | 45   | 55          | 51          | 151             |
| 7,673               | 7,434       | 8,981       | 24,088          | 6,103                 | 5,794       | 6,210       | 18,107          | 203  | 227         | 245         | 675             |
| 4,358               | 4,827       | 4,335       | 13,520          | 3,734                 | 4,402       | 3,763       | 11,899          | 129  | 147         | 130         | 406             |
| 1,315               | 1,158       | 1,197       | 3,670           | 1,137                 | 903         | 962         | 3,002           | 34   | 33          | 43          | 110             |
| 14,458              | 14,731      | 16,051      | 45,240          | 11,620                | 11,925      | 11,921      | 35,467          | 410  | 462         | 469         | 1,342           |
| 2,943               | 3,445       | 3,028       | 9,416           | 2,404                 | 2,961       | 2,434       | 7,799           | 75   | 87          | 80          | 242             |
| 12,821              | 14,511      | 14,515      | 41,847          | 8,237                 | 8,593       | 7,687       | 24,517          | 602  | 692         | 646         | 1,940           |
| 21,032              | 18,550      | 16,135      | 55,717          | 11,771                | 10,491      | 9,598       | 31,860          | 682  | 641         | 572         | 1,895           |
| 33,853              | 33,061      | 30,650      | 97,564          | 20,008                | 19,084      | 17,285      | 56,377          | 1,284                                      | 1,333       | 1,218       | 3,835           |
| 528                 | 651         | 390         | 1,569           | 330                   | 326         | 228         | 884             | 13   | 16          | 9           | 38              |
| 6,432               | 6,810       | 7,729       | 20,971          | 3,402                 | 3,574       | 4,229       | 11,205          | 343  | 371         | 380         | 1,094           |
| 43,756              | 43,967      | 41,797      | 129,520         | 26,144                | 25,945      | 24,176      | 76,265          | 1,715                                      | 1,806       | 1,687       | 5,209           |
| 4,531               | 4,668       | 3,265       | 12,464          | 3,150                 | 3,344       | 2,470       | 8,964           | 191  | 217         | 135         | 543             |
| 1,760               | 2,344       | 1,689       | 5,793           | 1,104                 | 1,243       | 930         | 3,277           | 57   | 73          | 50          | 180             |
| 2,589               | 2,951       | 2,273       | 7,813           | 1,915                 | 2,354       | 1,602       | 5,871           | 80   | 94          | 71          | 245             |
| 5,432               | 5,823       | 4,617       | 15,872          | 3,858                 | 4,030       | 3,227       | 11,115          | 234  | 263         | 194         | 691             |
| 2,213               | 2,226       | 2,484       | 6,923           | 1,446                 | 1,195       | 1,590       | 4,231           | 67   | 69          | 74          | 210             |
| 11,565              | 13,271      | 11,186      | 36,022          | 9,412                 | 10,954      | 8,758       | 29,124          | 364  | 424         | 412         | 1,200           |
| 6,683               | 6,513       | 8,301       | 21,497          | 4,263                 | 4,188       | 6,044       | 14,495          | 356  | 364         | 420         | 1,141           |
| 34,773              | 37,796      | 33,815      | 106,384         | 25,148                | 27,308      | 24,621      | 77,077          | 1,349                                      | 1,504       | 1,356       | 4,209           |
| 157,720             | 164,832     | 155,381     | 477,933         | 90,965                | 95,425      | 89,022      | 275,413         | 6,532                                      | 7,071       | 6,557       | 20,159          |

## MONTHLY ROOM/UNIT OCCUPANCY RATES

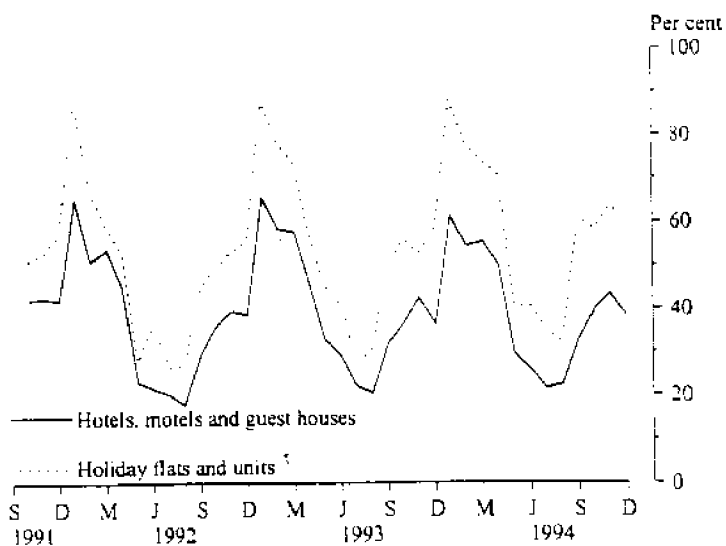
Graphs on these pages compare room occupancy rates for hotels, motels and guest houses with facilities with unit occupancy rates for holiday unit establishments for each Statistical Division and the East Coast Tourist area.



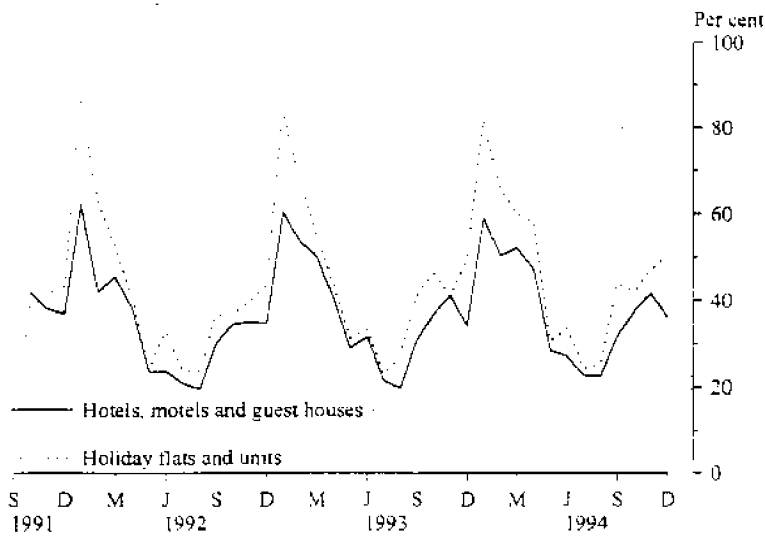
GREATER HOBART STATISTICAL DIVISION



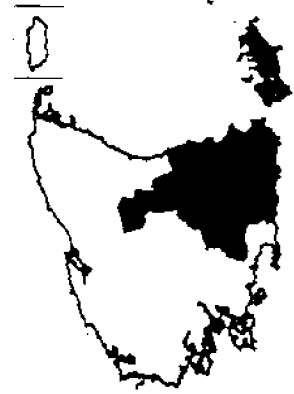
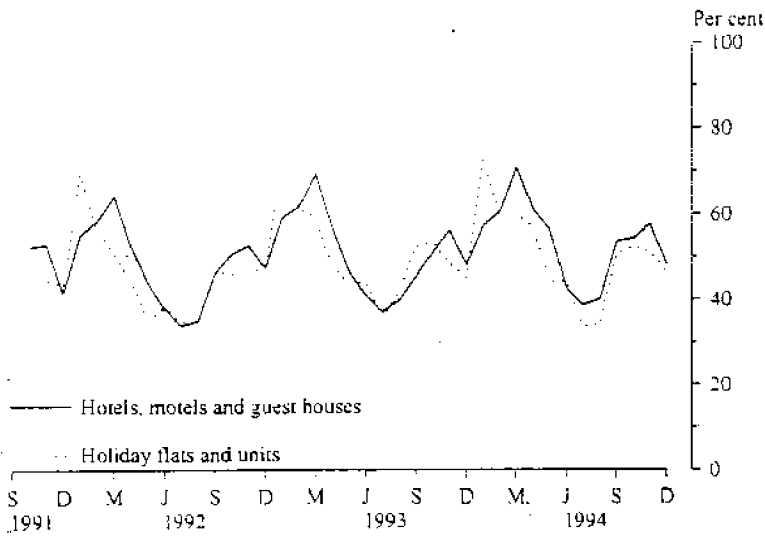
SOUTHERN STATISTICAL DIVISION



**EAST COAST TOURIST AREA**



**NORTHERN STATISTICAL DIVISION**



**MERSEY-LYELL STATISTICAL DIVISION**

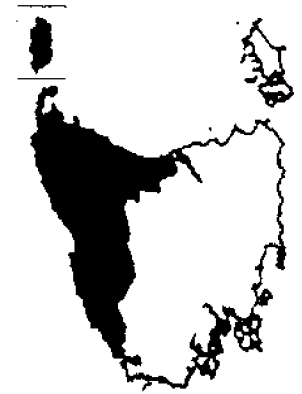
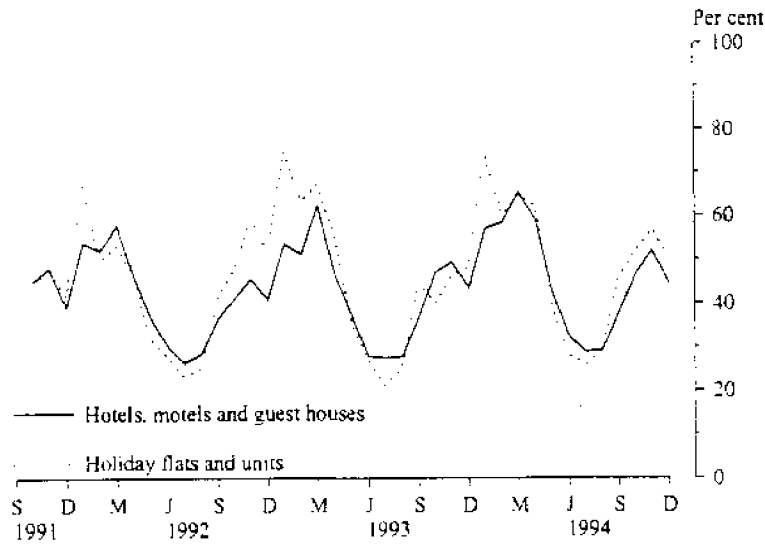


TABLE 10 — HOLIDAY FLATS, UNITS AND HOUSES BY STATISTICAL DIVISION AND SELECTED STATISTICAL AREAS, TASMANIA

| Particulars                               | Northern (SD)       |               |   |                     | Total         | Mersey-Lyell (SD) | Total Tasmania | East Coast (a) |
|---|---------------------|---------------|---|---------------------|---------------|-------------------|----------------|----------------|
|   | Greater Hobart (SD) | Southern (SD) | Greater Launceston and Central North (SSDs) | North Eastern (SSD) |               |                   |                |                |
| LETTING ENTITIES, CAPACITY AND EMPLOYMENT |                     |               |   |                     |               |                   |                |                |
| <i>December quarter 1993—</i>             |                     |               |   |                     |               |                   |                |                |
| Letting entities                          | 13                  | 9             | 7   | 6                   | 13            | 15                | 50             | 10             |
| Flats, units and houses                   |                     |               |   |                     |               |                   |                |                |
| Single bedroom                            | 53                  | 22            | 110   | 26                  | 136           | 46                | 257            | 42             |
| Multiple bedroom                          | 170                 | 75            | 105   | 64                  | 169           | 100               | 514            | 83             |
| <i>Total flats, units and houses</i>      | <i>223</i>          | <i>97</i>     | <i>215</i>                                  | <i>90</i>           | <i>305</i>    | <i>146</i>        | <i>771</i>     | <i>125</i>     |
| Bed spaces                                | 955                 | 495           | 826   | 464                 | 1,290         | 626               | 3,366          | 588            |
| Employment (persons)                      | 67                  | 51            | 129   | 31                  | 160           | 47                | 325            | 53             |
| <i>December quarter 1994—</i>             |                     |               |   |                     |               |                   |                |                |
| Letting entities                          | 13                  | 9             | 10  | 7                   | 17            | 13                | 52             | 11             |
| Flats, units and houses                   |                     |               |   |                     |               |                   |                |                |
| Single bedroom                            | 54                  | 21            | 121   | 30                  | 151           | 39                | 265            | 41             |
| Multiple bedroom                          | 177                 | 81            | 123   | 71                  | 194           | 99                | 551            | 95             |
| <i>Total flats, units and houses</i>      | <i>231</i>          | <i>102</i>    | <i>244</i>                                  | <i>101</i>          | <i>345</i>    | <i>138</i>        | <i>816</i>     | <i>136</i>     |
| Bed spaces                                | 1,041               | 519           | 902   | 477                 | 1,379         | 639               | 3,578          | 636            |
| Employment (persons)                      | 76                  | 47            | 129   | 33                  | 162           | 54                | 339            | 53             |
| UNIT NIGHTS OCCUPIED                      |                     |               |   |                     |               |                   |                |                |
| <i>December quarter 1993</i>              | <i>13,253</i>       | <i>4,991</i>  | <i>10,878</i>                               | <i>2,525</i>        | <i>13,703</i> | <i>6,009</i>      | <i>37,956</i>  | <i>5,257</i>   |
| <i>1994—</i>                              |                     |               |   |                     |               |                   |                |                |
| October                                   | 5,099               | 1,842         | 4,791                                       | 821                 | 5,612         | 2,214             | 14,767         | 1,778          |
| November                                  | 5,066               | 1,945         | 4,414                                       | 882                 | 5,296         | 2,348             | 14,655         | 1,919          |
| December                                  | 4,359               | 1,911         | 3,784                                       | 1,157               | 4,941         | 2,142             | 13,353         | 2,124          |
| <i>December quarter 1994</i>              | <i>14,324</i>       | <i>5,698</i>  | <i>12,989</i>                               | <i>2,860</i>        | <i>15,849</i> | <i>6,704</i>      | <i>42,775</i>  | <i>5,821</i>   |
| UNIT OCCUPANCY RATES (per cent)           |                     |               |   |                     |               |                   |                |                |
| <i>December quarter 1993</i>              | <i>64.6</i>         | <i>55.9</i>   | <i>55.0</i>                                 | <i>34.1</i>         | <i>48.8</i>   | <i>44.7</i>       | <i>53.5</i>    | <i>45.7</i>    |
| <i>1994—</i>                              |                     |               |   |                     |               |                   |                |                |
| October                                   | 71.2                | 58.3          | 63.3  | 26.2                | 52.5          | 51.8              | 58.4           | 42.2           |
| November                                  | 73.1                | 63.6          | 60.3  | 29.1                | 51.2          | 56.7              | 59.9           | 47.0           |
| December                                  | 60.9                | 60.4          | 50.0  | 37.0                | 46.2          | 50.1              | 52.8           | 50.4           |
| <i>December quarter 1994</i>              | <i>68.3</i>         | <i>60.7</i>   | <i>57.9</i>                                 | <i>30.8</i>         | <i>49.9</i>   | <i>52.8</i>       | <i>57.0</i>    | <i>46.5</i>    |
| UNIT LETTINGS                             |                     |               |   |                     |               |                   |                |                |
| <i>December quarter 1993</i>              | <i>4,317</i>        | <i>3,160</i>  | <i>5,918</i>                                | <i>1,386</i>        | <i>7,304</i>  | <i>3,356</i>      | <i>18,137</i>  | <i>2,950</i>   |
| <i>1994—</i>                              |                     |               |   |                     |               |                   |                |                |
| October                                   | 1,656               | 1,217         | 2,474                                       | 458                 | 2,932         | 1,255             | 7,060          | 1,084          |
| November                                  | 1,791               | 1,295         | 2,291                                       | 533                 | 2,824         | 1,417             | 7,327          | 1,196          |
| December                                  | 1,750               | 1,200         | 2,058                                       | 562                 | 2,620         | 1,229             | 6,799          | 1,194          |
| <i>December quarter 1994</i>              | <i>5,197</i>        | <i>3,712</i>  | <i>6,823</i>                                | <i>1,553</i>        | <i>8,376</i>  | <i>3,901</i>      | <i>21,186</i>  | <i>3,474</i>   |
| AVERAGE LENGTH OF STAY (days)             |                     |               |   |                     |               |                   |                |                |
| <i>December quarter 1993</i>              | <i>3.1</i>          | <i>1.6</i>    | <i>1.8</i>                                  | <i>2.0</i>          | <i>1.9</i>    | <i>1.8</i>        | <i>2.1</i>     | <i>1.8</i>     |
| <i>1994—</i>                              |                     |               |   |                     |               |                   |                |                |
| October                                   | 3.1                 | 1.5           | 1.9   | 1.8                 | 1.9           | 1.8               | 2.1            | 1.6            |
| November                                  | 2.8                 | 1.5           | 1.9   | 1.7                 | 1.9           | 1.7               | 2.0            | 1.6            |
| December                                  | 2.5                 | 1.6           | 1.8   | 2.1                 | 1.9           | 1.7               | 2.0            | 1.8            |
| <i>December quarter 1994</i>              | <i>2.8</i>          | <i>1.5</i>    | <i>1.9</i>                                  | <i>1.8</i>          | <i>1.9</i>    | <i>1.7</i>        | <i>2.0</i>     | <i>1.7</i>     |
| TAKINGS FROM ACCOMMODATION (\$'000)       |                     |               |   |                     |               |                   |                |                |
| <i>December quarter 1993</i>              | <i>861</i>          | <i>360</i>    | <i>752</i>                                  | <i>139</i>          | <i>391</i>    | <i>339</i>        | <i>2,450</i>   | <i>334</i>     |
| <i>1994—</i>                              |                     |               |   |                     |               |                   |                |                |
| October                                   | 351                 | 150           | 355   | 40                  | 395           | 121               | 1,017          | 131            |
| November                                  | 341                 | 150           | 332   | 45                  | 377           | 131               | 999            | 135            |
| December                                  | 339                 | 162           | 320   | 54                  | 374           | 145               | 1,020          | 148            |
| <i>December quarter 1994</i>              | <i>1,031</i>        | <i>462</i>    | <i>1,007</i>                                | <i>139</i>          | <i>1,146</i>  | <i>396</i>        | <i>3,036</i>   | <i>413</i>     |

(a) The East Coast Tourist Area comprises Glanville-Spring Bay (M) and Break O' Day (M).



TABLE 11 — CARAVAN PARKS BY STATISTICAL DIVISION AND SELECTED STATISTICAL AREAS, TASMANIA

| Particulars                             | Northern (SD)       |               |   |                     |               | Total         | Mersey-Lyell (SD) | Total Tasmania | East Coast (a) |
|---|---------------------|---------------|---|---------------------|---------------|---------------|-------------------|----------------|----------------|
|   | Greater Hobart (SD) | Southern (SD) | Greater Launceston and Central North (SSDs) | North Eastern (SSD) |               |               |                   |                |                |
| ESTABLISHMENTS, CAPACITY AND EMPLOYMENT |                     |               |   |                     |               |               |                   |                |                |
| <i>December quarter 1993—</i>           |                     |               |   |                     |               |               |                   |                |                |
| Establishments                          | 8                   | 16            | 11  | 8                   | 19            | 25            | 68                | 10             |                |
| Capacity                                |                     |               |   |                     |               |               |                   |                |                |
| On-site vans                            | 79                  | 57            | 57  | 27                  | 84            | 174           | 394               | 56             |                |
| Other powered sites                     | 308                 | 663           | 498   | 504                 | 1,002         | 1,333         | 3,306             | 536            |                |
| Unpowered sites                         | 262                 | 346           | 526   | 639                 | 1,165         | 550           | 2,323             | 474            |                |
| Cabins, flats, etc.                     | 62                  | 102           | 61  | 16                  | 77            | 161           | 402               | 60             |                |
| <i>Total capacity</i>                   | <i>711</i>          | <i>1,168</i>  | <i>1,142</i>                                | <i>1,186</i>        | <i>2,328</i>  | <i>2,218</i>  | <i>6,425</i>      | <i>1,126</i>   |                |
| Sites occupied by long-term guests      | 90                  | 20            | 94  | 8                   | 102           | 193           | 405               | 26             |                |
| Other sites permanently reserved        | 14                  | 294           | 95  | 302                 | 397           | 187           | 892               | 331            |                |
| Employment (persons)                    | 31                  | 62            | 32  | 22                  | 54            | 77            | 224               | 38             |                |
| <i>December quarter 1994—</i>           |                     |               |   |                     |               |               |                   |                |                |
| Establishments                          | 8                   | 18            | 12  | 8                   | 20            | 29            | 75                | 11             |                |
| Capacity                                |                     |               |   |                     |               |               |                   |                |                |
| On-site vans                            | 80                  | 63            | 56  | 22                  | 78            | 167           | 388               | 50             |                |
| Other powered sites                     | 310                 | 791           | 492   | 524                 | 1,016         | 1,486         | 3,603             | 656            |                |
| Unpowered sites                         | 266                 | 387           | 562   | 639                 | 1,201         | 650           | 2,504             | 530            |                |
| Cabins, flats, etc.                     | 62                  | 128           | 72  | 20                  | 92            | 176           | 458               | 77             |                |
| <i>Total capacity</i>                   | <i>718</i>          | <i>1,369</i>  | <i>1,182</i>                                | <i>1,205</i>        | <i>2,387</i>  | <i>2,479</i>  | <i>6,953</i>      | <i>1,313</i>   |                |
| Sites occupied by long-term guests      | 102                 | 30            | 76  | 7                   | 83            | 246           | 461               | 34             |                |
| Other sites permanently reserved        | 14                  | 329           | 96  | 279                 | 375           | 288           | 1,006             | 351            |                |
| Employment (persons)                    | 36                  | 75            | 40  | 20                  | 60            | 95            | 266               | 44             |                |
| SITE NIGHTS OCCUPIED                    |                     |               |   |                     |               |               |                   |                |                |
| <i>December quarter 1993</i>            | <i>19,424</i>       | <i>42,790</i> | <i>26,727</i>                               | <i>35,548</i>       | <i>62,275</i> | <i>53,200</i> | <i>177,589</i>    | <i>44,181</i>  |                |
| <i>1994—</i>                            |                     |               |   |                     |               |               |                   |                |                |
| October                                 | 6,365               | 14,345        | 8,487                                       | 10,320              | 18,807        | 20,656        | 60,173            | 14,609         |                |
| November                                | 7,286               | 14,821        | 8,376                                       | 10,530              | 18,906        | 21,142        | 62,155            | 14,957         |                |
| December                                | 7,477               | 18,293        | 8,622                                       | 12,741              | 20,963        | 25,579        | 72,412            | 17,593         |                |
| <i>December quarter 1994</i>            | <i>21,128</i>       | <i>47,559</i> | <i>25,485</i>                               | <i>33,191</i>       | <i>58,676</i> | <i>67,377</i> | <i>194,740</i>    | <i>47,159</i>  |                |
| SITE OCCUPANCY RATES (per cent)         |                     |               |   |                     |               |               |                   |                |                |
| <i>December quarter 1993</i>            | <i>29.7</i>         | <i>39.8</i>   | <i>25.4</i>                                 | <i>32.6</i>         | <i>29.1</i>   | <i>26.1</i>   | <i>30.1</i>       | <i>42.6</i>    |                |
| <i>1994—</i>                            |                     |               |   |                     |               |               |                   |                |                |
| October                                 | 28.6                | 33.8          | 23.2  | 27.6                | 25.4          | 26.9          | 27.9              | 35.9           |                |
| November                                | 33.8                | 36.1          | 23.6  | 29.1                | 26.4          | 28.4          | 29.8              | 38.0           |                |
| December                                | 33.6                | 43.3          | 23.5  | 33.0                | 28.3          | 33.3          | 33.6              | 43.2           |                |
| <i>December quarter 1994</i>            | <i>32.0</i>         | <i>37.8</i>   | <i>23.4</i>                                 | <i>29.9</i>         | <i>26.7</i>   | <i>29.5</i>   | <i>30.4</i>       | <i>39.0</i>    |                |
| TAKINGS FROM ACCOMMODATION (\$'000)     |                     |               |   |                     |               |               |                   |                |                |
| <i>December quarter 1993</i>            | <i>301</i>          | <i>336</i>    | <i>283</i>                                  | <i>109</i>          | <i>392</i>    | <i>559</i>    | <i>1,589</i>      | <i>265</i>     |                |
| <i>1994—</i>                            |                     |               |   |                     |               |               |                   |                |                |
| October                                 | 102                 | 113           | 99  | 29                  | 128           | 182           | 525               | 93             |                |
| November                                | 116                 | 137           | 95  | 43                  | 138           | 198           | 589               | 115            |                |
| December                                | 114                 | 173           | 114   | 55                  | 169           | 249           | 704               | 126            |                |
| <i>December quarter 1994</i>            | <i>332</i>          | <i>423</i>    | <i>309</i>                                  | <i>127</i>          | <i>435</i>    | <i>628</i>    | <i>1,818</i>      | <i>334</i>     |                |

(a) The East Coast Tourist Area comprises Giamorgan, Spring Bay (M) and Break O' Day (M).

TABLE 12 — VISITOR HOSTELS BY STATISTICAL DIVISION, TASMANIA

| Particulars                             | Greater Hobart<br>(SD) | Southern<br>(SD) | Greater Hobart (SD)<br>and Southern (SD) | Northern<br>(SD) | Mersey-Lyell<br>(SD) | Total<br>Tasmania |
|---|------------------------|------------------|--|------------------|----------------------|-------------------|
| ESTABLISHMENTS, CAPACITY AND EMPLOYMENT |                        |                  |  |                  |                      |                   |
| <i>December quarter 1993—</i>           |                        |                  |  |                  |                      |                   |
| Establishments                          | 5                      | 14               | 19                                       | 10               | 9                    | 38                |
| Bed spaces                              | n.p.                   | n.p.             | 633                                      | 310              | 523                  | 1,471             |
| Employment (persons)                    | n.p.                   | n.p.             | 47                                       | 18               | 29                   | 94                |
| <i>December quarter 1994—</i>           |                        |                  |  |                  |                      |                   |
| Establishments                          | 8                      | 16               | 24                                       | 11               | 9                    | 44                |
| Bed spaces                              | 442                    | 433              | 875                                      | 332              | 606                  | 1,813             |
| Employment (persons)                    | 40                     | 24               | 64                                       | 20               | 28                   | 112               |
| GUEST NIGHTS                            |                        |                  |  |                  |                      |                   |
| <i>December quarter 1993</i>            | n.p.                   | n.p.             | 10,480                                   | 2,947            | 5,510                | 18,937            |
| <i>1994—</i>                            |                        |                  |  |                  |                      |                   |
| October                                 | 2,987                  | 1,439            | 4,426                                    | 1,010            | 1,520                | 6,956             |
| November                                | 3,715                  | 1,946            | 5,661                                    | 1,107            | 2,145                | 8,913             |
| December                                | 5,877                  | 2,913            | 8,790                                    | 986              | 2,731                | 12,507            |
| <i>December quarter 1994</i>            | 12,579                 | 6,298            | 18,877                                   | 3,103            | 6,396                | 28,375            |
| BED OCCUPANCY RATES (per cent)          |                        |                  |  |                  |                      |                   |
| <i>December quarter 1993</i>            | n.p.                   | n.p.             | 15.0                                     | 10.3             | 11.3                 | 14.0              |
| <i>1994—</i>                            |                        |                  |  |                  |                      |                   |
| October                                 | 21.8                   | 11.2             | 16.7                                     | 9.8              | 8.1                  | 12.5              |
| November                                | 28.0                   | 15.0             | 21.6                                     | 11.1             | 11.3                 | 16.4              |
| December                                | 42.9                   | 21.7             | 32.4                                     | 9.6              | 14.5                 | 22.3              |
| <i>December quarter 1994</i>            | 30.9                   | 16.1             | 23.6                                     | 10.2             | 11.5                 | 17.1              |
| GUEST ARRIVALS                          |                        |                  |  |                  |                      |                   |
| <i>December quarter 1993</i>            | n.p.                   | n.p.             | 6,954                                    | 2,185            | 4,279                | 13,418            |
| <i>1994—</i>                            |                        |                  |  |                  |                      |                   |
| October                                 | 1,343                  | 1,176            | 2,519                                    | 699              | 1,204                | 4,422             |
| November                                | 1,570                  | 1,419            | 2,989                                    | 839              | 1,618                | 5,446             |
| December                                | 2,524                  | 2,037            | 4,561                                    | 864              | 1,813                | 7,238             |
| <i>December quarter 1994</i>            | 5,437                  | 4,632            | 10,069                                   | 2,402            | 4,635                | 17,106            |
| AVERAGE LENGTH OF STAY (days)           |                        |                  |  |                  |                      |                   |
| <i>December quarter 1993</i>            | n.p.                   | n.p.             | 1.5                                      | 1.3              | 1.3                  | 1.4               |
| <i>1994—</i>                            |                        |                  |  |                  |                      |                   |
| October                                 | 2.2                    | 1.2              | 1.8                                      | 1.4              | 1.3                  | 1.6               |
| November                                | 2.4                    | 1.4              | 1.9                                      | 1.3              | 1.3                  | 1.6               |
| December                                | 2.3                    | 1.4              | 1.9                                      | 1.1              | 1.5                  | 1.7               |
| <i>December quarter 1994</i>            | 2.3                    | 1.4              | 1.9                                      | 1.3              | 1.4                  | 1.7               |
| TAKINGS FROM ACCOMMODATION (\$'000)     |                        |                  |  |                  |                      |                   |
| <i>December quarter 1993</i>            | n.p.                   | n.p.             | 124                                      | 27               | 64                   | 215               |
| <i>1994—</i>                            |                        |                  |  |                  |                      |                   |
| October                                 | 35                     | 19               | 54                                       | 10               | 28                   | 92                |
| November                                | 47                     | 24               | 72                                       | 11               | 37                   | 120               |
| December                                | 72                     | 34               | 106                                      | 11               | 47                   | 164               |
| <i>December quarter 1994</i>            | 155                    | 77               | 232                                      | 32               | 113                  | 377               |

TABLE 13. PASSENGER ARRIVALS AND DEPARTURES, TASMANIA.  
INTERSTATE AND INTERNATIONAL (a)(d)  
(Source: Tourism, Sport & Recreation)

| Period    | Arrivals   |               |         | Total   | Total Departures (b) | Cruise Ships (c) |            |
|-----------|------------|---------------|---------|---------|----------------------|------------------|------------|
|           | By air     |               | By sea  |         |                      | Arrivals         | Departures |
|           | Interstate | International |         |         |                      |                  |            |
| 1987      | 526,517    | 9,446         | 88,343  | 624,306 | 626,297              | 7,398            | 6,745      |
| 1988      | 571,344    | 8,625         | 101,572 | 681,541 | 683,635              | 5,497            | 6,161      |
| 1989      | 449,481    | 8,489         | 118,646 | 576,616 | 591,152              | 4,149            | 4,149      |
| 1990      | 555,631    | 8,629         | 120,004 | 684,264 | 679,833              | 3,255            | 3,255      |
| 1991      | 625,366    | 5,897         | 131,375 | 762,638 | 764,731              | 6,720            | 6,663      |
| 1992      | 652,092    | 4,428         | 114,969 | 771,489 | 761,109              | 4,608            | 4,608      |
| 1993      | 694,244    | 5,144         | 115,381 | 814,769 | 814,835              | 2,033            | 2,033      |
| 1994      | 745,508    | 4,166         | 128,644 | 878,318 | 880,936              | 6,592            | 6,592      |
| 1992-     |            |               |         |         |                      |                  |            |
| July      | 46,957     | 210           | 5,156   | 52,323  | 54,820               | -                | -          |
| August    | 42,044     | 335           | 4,899   | 47,278  | 51,723               | -                | -          |
| September | 58,021     | 427           | 10,288  | 68,736  | 55,890               | -                | -          |
| October   | 56,678     | 408           | 8,454   | 65,540  | 64,890               | -                | -          |
| November  | 52,044     | 296           | 8,625   | 60,965  | 59,016               | -                | -          |
| December  | 65,339     | 385           | 16,538  | 82,262  | 66,297               | -                | -          |
| 1993-     |            |               |         |         |                      |                  |            |
| January   | 71,801     | 513           | 15,475  | 87,789  | 107,018              | 150              | 150        |
| February  | 60,624     | 656           | 12,278  | 73,558  | 65,492               | 697              | 697        |
| March     | 57,002     | 449           | 13,040  | 70,491  | 73,559               | 586              | 586        |
| April     | 62,346     | 340           | 12,083  | 75,269  | 80,402               | -                | -          |
| May       | 45,373     | 451           | 5,741   | 51,565  | 61,725               | -                | -          |
| June      | 51,154     | 258           | 6,067   | 57,479  | 54,776               | -                | -          |
| July      | 45,868     | 523           | 4,855   | 51,246  | 53,956               | -                | -          |
| August    | 45,988     | 357           | 4,553   | 50,898  | 55,644               | -                | -          |
| September | 62,578     | 379           | 9,415   | 72,372  | 58,126               | -                | -          |
| October   | 57,362     | 434           | 7,965   | 65,761  | 65,042               | -                | -          |
| November  | 59,592     | 393           | 8,561   | 68,546  | 66,733               | -                | -          |
| December  | 74,056     | 391           | 15,348  | 89,795  | 72,362               | 600              | 600        |
| 1994-     |            |               |         |         |                      |                  |            |
| January   | 73,470     | 473           | 12,536  | 86,479  | 103,610              | 1,596            | 1,596      |
| February  | 63,506     | 413           | 12,324  | 76,243  | 69,690               | 2,470            | 2,470      |
| March     | 66,848     | 414           | 13,054  | 80,316  | 85,030               | 1,064            | 1,064      |
| April     | 62,519     | 502           | 11,732  | 74,753  | 78,095               | -                | -          |
| May       | 50,076     | 242           | 8,151   | 58,469  | 70,924               | -                | -          |
| June      | 52,737     | 167           | 7,629   | 60,533  | 56,244               | -                | -          |
| July      | 52,995     | 186           | 6,983   | 60,164  | 63,737               | -                | -          |
| August    | 50,447     | 250           | 7,199   | 57,896  | 61,996               | -                | -          |
| September | 69,099     | 340           | 13,430  | 82,869  | 66,659               | -                | -          |
| October   | 61,361     | 422           | 11,466  | 73,249  | 71,846               | 980              | 980        |
| November  | 63,701     | 338           | 10,707  | 74,746  | 73,918               | 482              | 482        |
| December  | 78,749     | 419           | 13,433  | 92,601  | 79,187               | -                | -          |

(a) The following persons are not included in these statistics : passengers under three years of age accompanied by an adult ; passengers travelling on chartered flights with minor carriers ; passengers travelling on private or VIP flights.

(b) The proportion of departing passengers who were visitors was shown to be about 58 per cent in the 1981 Tasmanian Visitor Survey, around 55 per cent in the 1984 TVS, about 53 per cent in the 1986 TVS, nearly 60 per cent in the 1988 TVS, close to 65 per cent in the 1990 TVS, almost 58 per cent in the 1991 TVS, almost 55 per cent in the 1992 TVS, and just over 58 per cent in the 1993 TVS.

(c) Cruise ship statistics were not collected before November 1986 and are not included in Total Arrivals and Total Departures.

(d) The domestic airline pilots dispute commenced on 18 August 1989 with the pilots working restricted hours (9 a.m. to 5 p.m.). The pilots were suspended on 23 August 1989.

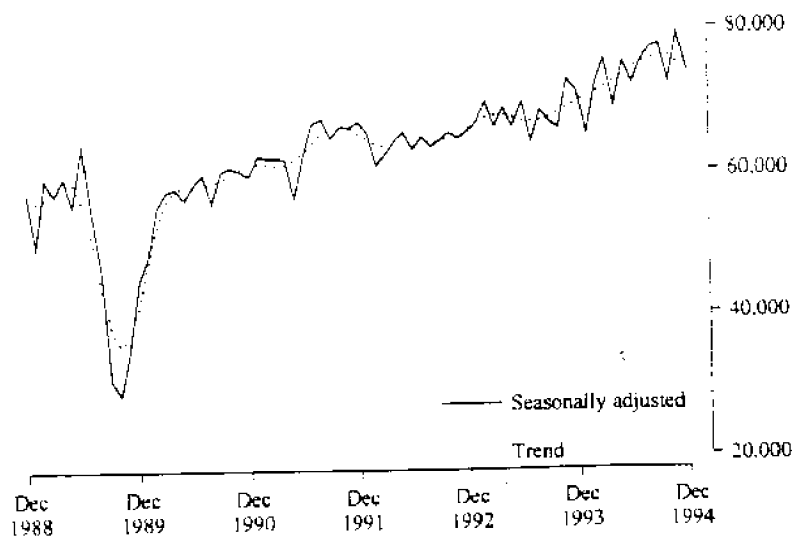
TABLE 14. TOTAL PASSENGER ARRIVALS BY AIR AND SEA INTO TASMANIA :  
SEASONALLY ADJUSTED AND TREND SERIES (a)(b)

| Period        | Original | Seasonally adjusted (a) | Trend  |
|---------------|----------|-------------------------|--------|
| December 1985 | 65,323   | 53,510                  | 52,355 |
| 1987          | 63,187   | 52,082                  | 53,429 |
| 1988          | 68,809   | 57,058                  | 56,003 |
| 1989          | 53,613   | 44,471                  | 41,098 |
| 1990          | 73,421   | 59,307                  | 60,865 |
| 1991          | 83,162   | 66,847                  | 65,082 |
| 1992          | 82,262   | 65,418                  | 65,953 |
| 1993          | 89,795   | 70,896                  | 69,538 |
| 1994          | 92,601   | 73,654                  | 75,796 |
| 1992-         |          |                         |        |
| October       | 65,540   | 65,235                  | 64,517 |
| November      | 60,965   | 64,334                  | 65,199 |
| December      | 82,262   | 65,418                  | 65,953 |
| 1993-         |          |                         |        |
| January       | 87,789   | 66,589                  | 66,714 |
| February      | 73,358   | 69,583                  | 67,313 |
| March         | 70,491   | 66,074                  | 67,607 |
| April         | 75,269   | 68,587                  | 67,637 |
| May           | 51,565   | 66,034                  | 67,322 |
| June          | 57,479   | 69,510                  | 66,870 |
| July          | 51,246   | 63,895                  | 66,753 |
| August        | 50,898   | 68,231                  | 66,987 |
| September     | 72,372   | 66,639                  | 67,385 |
| October       | 65,761   | 65,813                  | 67,991 |
| November      | 68,546   | 72,648                  | 68,740 |
| December      | 89,795   | 70,896                  | 69,538 |
| 1994-         |          |                         |        |
| January       | 86,479   | 65,011                  | 70,304 |
| February      | 76,243   | 72,066                  | 70,934 |
| March         | 80,316   | 75,487                  | 71,588 |
| April         | 74,753   | 68,991                  | 72,405 |
| May           | 58,469   | 75,071                  | 73,318 |
| June          | 60,533   | 72,090                  | 74,263 |
| July          | 60,164   | 75,220                  | 74,959 |
| August        | 57,896   | 77,208                  | 75,503 |
| September     | 82,869   | 77,430                  | 75,901 |
| October       | 73,249   | 72,248                  | 75,984 |
| November      | 74,746   | 79,140                  | 74,845 |
| December      | 92,601   | 73,654                  | 75,796 |

(a) There is an annual recalculation of seasonal adjustment factors to include the most recent year's arrivals. This occurs at the end of each financial year and may cause revisions to previously-published seasonally-adjusted and trend figures, as can be seen in Table 14. A full printout of seasonally-adjusted and trend series figures dating back to 1971 can be obtained through the publication officer for this publication (Eddie Oakford).

(b) The domestic airline dispute commenced on 18 August 1989 with the pilots working restricted hours (9 a.m. to 5 p.m.). The pilots were suspended on 23 August 1989.

#### TOTAL ARRIVALS IN TASMANIA



## EXPLANATORY NOTES

- \*\*\*\*\*
- INTRODUCTION                   1    This publication contains data for Tasmania from a quarterly survey of tourist accommodation establishments. The period covered by the latest survey is the 3 months ended 31 December 1994.
- SCOPE                           2    Tourist accommodation establishments currently included in the survey comprise two groups:
- Establishments which provide predominantly short-term accommodation (i.e. for periods of less than 2 months) to the general public. These include:
    - Hotels, motels and guest houses, with facilities* being hotels licensed to operate a public bar and motels, private hotels and guest houses all of which provide a bath (or shower) and toilet in most guest rooms and have breakfast available for guests.
    - NOTE: From December quarter 1993, hotel, motel and guest house establishments with fewer than five rooms have been formally excluded from the scope of this statistical collection. This change in scope resulted in the exclusion of 13 establishments which in the September quarter 1993 Survey aggregates for Tasmania represented 6.8 per cent of hotel, motel and guest house establishments but accounted for only 0.7 per cent or less of accommodation capacity, occupancy and takings respectively.
    - Holiday flats, units and houses* (excluding establishments predominantly operated on a time share basis) which are operated by owners or managers who have sole letting rights to at least five flats, units or houses or by real estate agents for short-term letting. They are mainly self-contained in terms of cooking, bath (or shower) and toilet facilities and do not have breakfast available for guests. Data for holiday flats, units and houses include short-term owner occupation as well as paying guest occupation.
    - Visitor hostels* which provide accommodation to visitors on a bed basis (rather than by the room). This category does not include establishments providing charity type accommodation (e.g. Salvation Army hostels) nor hotels, motels and guest houses without in-room facilities which provide accommodation on a per room basis.
  - *Caravan parks* which provide either predominantly short-term (i.e. for periods of less than 2 months) or predominantly long-term (i.e. for periods of 2 months or more) accommodation to the general public and which provide powered sites for caravans and toilet, shower and laundry facilities for guests.
- 3    Data collected and published for each type of establishment (other than holiday flats, units and houses) include both long-term and short-term guests at these establishments.
- 4    Establishments which provide more than one type of accommodation (e.g. a motel with attached caravan park) are treated as two or more separate establishments. However, self-contained units, flats, cabins, etc. attached to hotels, motels or to caravan parks are included in the capacity for those establishments and not treated as separate holiday flat, unit or house establishments.
- DEFINITIONS
- 5    *Number of establishments.* For hotels, motels and guest houses, caravan parks and visitor hostels, the number of establishments within the scope of the survey which operated for any part of the survey period, or which closed temporarily for the quarter for seasonal reasons.
- 6    *Number of letting entities.* For holiday flats, units and houses, the number of owners, managers or real estate agents within the scope of the survey who operated for any part of the survey period.
- 7    Capacity in terms of *Guest rooms, Bed spaces, Holiday units* or *Caravan park sites, etc.* is the maximum number available to accommodate paying guests during the survey period. Capacity closed temporarily for seasonal reasons is included.
- 8    *Bed spaces.* Three-quarter beds are counted as one bed space; double beds as two bed spaces. Cots are excluded.
- 9    *Total caravan park capacity* comprises *On-site vans, Other powered sites, Unpowered sites* and *Cabins, etc.*
- \*\*\*\*\*

## EXPLANATORY NOTES—continued

## DEFINITIONS continued.

- \*\*\*\*\*
- 10 Room nights available.** The number of guest rooms available multiplied by the number of days for which they were available during the survey period. Includes operating periods only for establishments closing (other than for seasonal reasons) or opening during the survey period.
- 11 Occupancy in terms of Room nights, Unit nights or Site nights occupied** refers to the total number of nights each guest room, holiday unit or caravan park site, etc. was occupied during the survey period.
- NOTE: From September quarter 1992, caravan park sites, etc. permanently reserved for 2 months or more at the end of the survey period but only casually occupied by their tenants have been recorded continuously as *Site nights occupied* irrespective of whether the tenants of individual sites were in residence on any particular night. (See also paragraph 14 below). Previously, usage of these sites was recorded as *Site nights occupied* only when their tenants were in the park. Total site occupancy rates from September quarter 1992 are therefore not comparable with those from previous quarters.
- 12 Occupancy in terms of Guest nights** refers to the total number of nights each paying guest stayed during the survey period.
- 13 Sites occupied by long-term guests.** The total number of sites, etc. occupied at the end of the survey period by guests who have stayed continuously for 2 months or more.
- 14 Other sites permanently reserved.** The total number of powered and unpowered sites, on-site vans and cabins, etc. continuously let for 2 months or more by the end of the survey period to tenants who occupy the sites only on a casual or sporadic basis. Separate data for this item are available only from September quarter 1992.
- 15 Occupancy rates** represent occupancy expressed as a percentage of total capacity available during the survey period – e.g.
- $$\text{Room occupancy rate (\%)} \text{ for the period} = \frac{\text{Room nights occupied}}{(\text{Guest rooms}) \times (\text{No. of days in the period})} \times 100$$
- providing that, for establishments closing (other than for seasonal reasons) or opening during the period, the denominator of the above expression includes only operating periods.
- 16 Guest arrivals.** The total number of paying guests counted only on the first night they stayed at the accommodation establishment.
- 17 Unit lettings.** The total number of times a holiday flat, unit or house was occupied by a new tenant, counted only on the first night it was occupied by the new tenant.
- 18 Average length of stay** is expressed in number of days and calculated:
- for hotels, motels and guest houses and for visitor hostels, by dividing *Guest nights* by *Guest arrivals* and
  - for holiday flats, units and houses, by dividing *Unit nights occupied* by *Unit lettings*.
- 19 Takings from accommodation.** Revenue received from the provision of accommodation. Takings from meals are excluded. Takings from accommodation for each month generally represent the takings received during that month. Where payments are received in advance of, or after, the provision of accommodation to guests, the monthly figure for takings from accommodation may not necessarily bear a direct relationship to the number of guests accommodated during the month. Rental and storage fees paid to caravan parks for the keeping of private vans in parks are included in the takings of the month they are received.
- 20 Star grading.** The grading of hotels and motels with facilities based on the classification system used by members of the Australian Automobile Association (AAA). The gradings are allocated according to a points system based on the amenities and facilities available to guests. Details of the grading scheme are contained in the RACV-RAASA members' publication *Accommodation Australia*, or the individual tour guides produced by members of the AAA. For the purpose of classifying establishments to a star
- \*\*\*\*\*

EXPLANATORY NOTES — *continued*DEFINITIONS — *continued*

grading in this publication. "half" star gradings are ignored (e.g. a two and a half star grading has been shown as two star).

21 *Employment.* The number of persons working at accommodation establishments at the end of the survey period (including working proprietors and those working on other than accommodation activities).

AUSTRALIAN STANDARD  
GEOGRAPHICAL  
CLASSIFICATION

22 Statistics presented in this publication have been classified according to the Australian Standard Geographical Classification (ASGC), Edition 2.4. This classification incorporates a number of hierarchic structures of geographic areas. The appropriate spatial units of the main structure of the ASGC used in this publication are:

*Statistical Local Areas (SLAs)*, which are legal Local Government Areas or parts thereof, which serve as the smallest type of spatial unit considered appropriate for the presentation of statistics and which add, without gaps or overlaps, to:

*Statistical Subdivisions (SSDs)* which in turn represent another, higher hierarchic level and add, without gaps or overlaps, to:

*Statistical Divisions (SDs)* which in turn add, without gaps or overlaps, to:

*Total Tasmania.*

For more detailed information, refer to the ASGC (1216.0).

## UNPUBLISHED STATISTICS

23 The ABS may make available on request certain unpublished tourist accommodation statistics. A charge may be made for this information.

## RELATED PUBLICATIONS

24 Publications for Australia, and each State and Territory, are released by the respective offices of the ABS. Tourist accommodation statistics for past quarters are available on request.

25 Other ABS publications which may be of interest include:

*Directory of Tourism Statistics* (1130.0) (irregular; first and latest issue: 1991)

*Overseas Arrivals and Departures, Australia* (3401.0) (monthly)

*Tourism Indicators Australia* (8634.0) (quarterly)

*Tourist Accommodation, Australia* (8635.0) (quarterly)

26 Current publications produced by the ABS are listed in the *Catalogue of Publications and Products* (1101.0). The ABS also issues the *Publications Advice* (1105.0) on Tuesdays and Fridays which lists publications to be released in the next few days. Both the *Catalogue* and *Publications Advice* are available from any ABS office.

SYMBOLS AND  
OTHER USAGES

n.a. not available

n.p. not available for publication but included in totals where applicable

r figure or series revised since previous issue

.. not applicable

— nil or rounded to zero

— break in continuity of the series (where drawn across a column between two consecutive figures)

27 Where figures have been rounded, discrepancies may occur between totals and the sums of the component items.

WILLIAM P. McREYNOLDS  
Deputy Commonwealth Statistician and  
Government Statistician of Tasmania



19 100 005

## For more information ...

The ABS publishes a wide range of statistics and other information on Australia's economic and social conditions. Details of what is available in various publications and other products can be found in the *ABS Catalogue of Publications and Products* available at all ABS Offices (see below for contact details).

### Information Consultancy Service

Information tailored to special needs of clients can be obtained from the Information Consultancy Service available at ABS Offices (see Information Inquiries below for contact details).

### National Dial-a-Statistic Line

0055 86 400

Steadycom P.L. premium rate 25c/21 4 secs.

This number gives 24-hour access, 365 days a year, for a range of statistics.

### Electronic Data Services

A large range of data is available via on-line services, diskette, magnetic tape, tape cartridge and CD ROM. For more details about these electronic data services, contact any ABS Office (see below).

### Bookshops and Subscriptions

There is a large number of ABS publications available from ABS bookshops (see below Bookshop Sales for contact details). The ABS also provides a subscription service through which nominated publications are supplied by mail on a regular basis (telephone Subscription Service toll free on 008 02 0608 Australia wide).

## Sales and Inquiries

#### Regional Offices

SYDNEY (02)  
MELBOURNE (03)  
BRISBANE (07)  
PERTH (09)  
ADELAIDE (08)  
HOBART (002)  
CANBERRA (06)  
DARWIN (089)

#### Information Inquiries

268 4611  
615 7000  
222 6351  
360 5140  
237 7100  
20 5800  
207 0326  
43 2111

#### Bookshop Sales

268 4620  
615 7829  
222 6350  
360 5307  
237 7582  
20 5800  
207 0326  
43 2111

#### National Office

ACT (06)

252 6007

008 020 608

### ABS Email Addresses

Keylink  
X.400  
Internet

STAT.INFO/ABS  
(C:AU,A:TELMEMO,O:ABS,SN:INFO,FN:STAT)  
STAT.INFO@ABS.TELEMOMO.AU



0051138-09724-0

Commonwealth of Australia 1995

Recommended retail price: \$25.00



2863560012948  
ISSN 0312-6900